



On-line PICASSO PROJECT

**Comprehensive Catalogue Raisonné
Prof. Dr. Enrique Mallen**

1963

Je vous embrasse
Tous les trois
Pierre
6.3.1.63.

Note autographe à Inès Sassier. Mougins. 3-January/1963. Ink. S/U. Artcurial. #320, 1331, 10/22/07. Formerly Inès and Gérard Sassier Collection.

OPP.63:236

Tête de femme. Mougins. 3-January/1963. Oil on canvas. 81 x 65 cm. Private collection.

OPP.63:286; PP.63:001; Z.XXIII:112; HG.95:32p; HP.64:192p





Tête de femme: profil II. Mougins. 3~4-January/1963.
Oil on canvas. 65 x 54 cm. Private collection.

OPP.63:328; PP.63:002; Z.XXIII:111; HP.64:193p;
LC.66*:10; RP.67a:32

Tête de femme. Mougins. 3, 6~16-January/1963. Oil on
canvas. 73 x 55 cm. Private collection.

OPP.63:330; PP.63:010; Z.XXIII:115; HP.64:195p





Tête de femme. Mougins. 4-January/1963. Oil on canvas. 73 x 55 cm. Private collection.

OPP.63:329; PP.63:003; Z.XXIII:110; HP.64:194p

Tête de femme I. Mougins. 5-January/1963. Oil on canvas. 65 x 52 cm. Private collection. Formerly Sotheby's. #38, 05/08/95.

OPP.63:117; PP.63:004; Z.XXIII:113; HP.64:197p





Tête de femme. Mougins. 5~6-January/1963. Oil on canvas. 73,8 x 55 cm. Sotheby's. #19, L18002, 02/28/18.

OPP.63:436; PP.63:005; Z.XXIII:114; ST.69*:12

Grand profil (Jacqueline). Mougins. 7-January/1963. Oil on canvas. 130 x 97 cm. Kunstsammlung Nordrhein-Westfalen, Düsseldorf. (Inv 1002).

OPP.63:160; PP.63:006; Z.XXIII:117; BA.90a*:40; BB.68*:50; DB.67*:96; DU.00*:n/a; DU.10b*:n/a; DU.68*:71; DU.76*:62p; EE.71*:109; GC.07:164p; HP.64:198p; HX.79*:85ff; IW.93:86p; KG.71:125; KG.85:125; KZ.70*:n/a; LC.88*:79; LO.64*:4; LO.74a*:109; LO.74a*:n/a; MA.91a*:37; PD.65:243p; TG.94*:152; WR.96:477p; WS.07*:9; WW.91:587p





Femme au miroir. Mougins. 7 [~8]-January/1963. Oil on canvas. 116 x 89 cm. Mr. and Mrs. Henry Markus Collection, Chicago.

OPP.63:141; PP.63:007; Z.XXIII:116; CH.68a*:58; HP.64:199p; WW.91:598p

L'enlèvement des Sabines (d'après Poussin et David).

Mougins. [4] 9-January ~ [4] 7-February/1963. Oil on canvas. 195,3 x 131,1 cm. The Museum of Fine Arts, Boston. (Inv 64.709). Juliana Cheney Edwards Collection. Tompkins Collection & Fanny P. Mason Fund in memory of Alice Thevin.

OPP.63:005; PP.63:011; Z.XXIII:121; BO.16*:n/a; CE.90:22; DQ.74:192p; GB.87:267; GB.87:298; GS.83*:1; GS.87:1; HP.65:143p; JB.08:83p; JL.71:116p; KG.71:248; KG.85:248; KK.93:31; LU.93:455p; PD.09:437p; PD.69:96p; PE.01a*:64; PF.10*:122; TG.88:60; TO.99*:179; TV.06*:44; UP.00:1071; WS.11:271p; WS.93*:143; WS.94:89p; WS.95a*:156; WW.91:577p





Carnaval. Mougins. 12-January/1963. Color pencil. [78 x 56]
65,5 x 50,5 cm. Private collection.

OPP.63:368; PP.63:008; Z.XXIII:118



Nu I. Mougins. 12-January/1963. Graphite on paper.
13.5 x 10,5 cm. Private collection.

OPP.63:440; PP.63:009; Z.XXIII:119



Le roi carnaval. Mougins. 12-January/1963. India ink & wax crayon on paper. 56,2 x 45,7 cm. Opera Gallery. 2023. Formerly Sotheby's. #41, PF2216, 10/25/22.

OPP.63:595

Le vieux roi. Mougins. [14~26-January]/1963. Linoleum cut in colors on Arches, edition 160. 64,5 x 53 cm. Fundación Almine & Bernard Ruiz-Picasso para el Arte. Also Christie's. #272, 9512, 10/31/00.

OPP.63:009; B.I:1152; Ba:1338.b; MA.23a*:19





Femme nue debout. Mougins. 14~26-January/1963.
Linoleum cut in colors on Arches, edition 50. 64,1 x 52,7 cm.
Christie's. #231, 1074, 05/01/02.

OPP.63:050; B.I:1107; Ba:1338.B.IIBa; MM.11b*:57

Têtes. Mougins. 15~17-January/1963. Linoleum cut
in black & two shades of brown on Arches, edition 50.
64 x 53 cm. Christie's. #280, 6960, 11/30/04.

OPP.63:096; B.I:1104; Ba:1338.r; MM.11b*:55





L'homme au baton. Mougins. 15~18-January/1963. Linoleum cut in black & two shades of brown on Arches, edition 50. 64 x 53 cm. Christie's. #281, 6960, 11/30/04.

OPP.63:097; B.I:1106; Ba:1338.IIba; MM.11b*:56

Visage. Mougins. 17-January/1963. Linoleum cut printed in beige and black. 64 x 52,8 cm. Kunsthalle Bremen. Der Kunstverein in Bremen, Kupferstichkabinett. Also Frederick Mulder Gallery, 2005.

OPP.63:107; B.I:1105; Ba:1339; GB.14*:165; LO.09*:n/a





Le picador. Vallauris. 21-January/1963. Painted & glazed white earthenware bowl. 16,8 cm. Sotheby's. #418, L08005 , 02/06/08.

OPP.63:228

Picador. Vallauris. 21-January/1963. White earthenware platter, partially glazed. 14,5 cm. Sotheby's. #83, PF1516, 12/10/15.

OPP.63:375





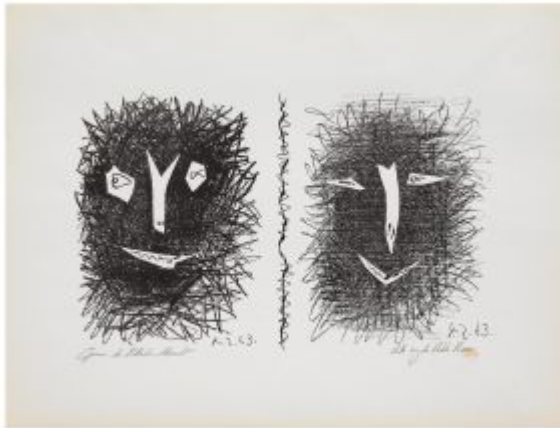
Visage (nez à angle droit). Vallauris. 21-June/1963. Painted & glazed ceramic; round plate. 25,4 cm. Hélène Bailly Gallery. Formerly Sotheby's. #19, N10249, 11/26/19; Marina Picasso Collection.

OPP.63:557

Scène de tauromachie. Vallauris. 21-January/1963. Terre de faïence plate, painted & glazed. 16 cm. Sotheby's. #335, PF2426, 04/17/24.

OPP.63:614





Deux masques (Fernand Mourlot, Picasso Lithographe IV). Mougins. 4-February/1963. Lithograph on Rives, edition 3000. 32 x 24,5 cm. Christie's. #364, 7063, 06/29/05.

OPP.63:021; B.I:1108; GC:125.1; M:388; GM.81*:328

Note autographe à Inès Sassier. Cannes. 4-February/1963. Ink. S/U. Artcurial. #321, 1331, 10/22/07. Formerly Inès and Gérard Sassier Collection.

OPP.63:233

Ma chère Inès
Mougins
A.M.
le 4-2-63.
Voici le chèque de 200000
Moi n'oubliez pas de faire
Merci
ou vous embrasse les trois
et bon à vous
Picasso



Autoportrait avec Ilya Ehrenburg. Mougins. 7-February/1963. Wax crayon & felt-tip pen over a photograph. 18,3 x 24 cm. Christie's. #677, 7026, 02/10/05.

OPP.63:360

1re de couverture. Mougins. 10-February/1963. Gouache, black crayon & blue crayon. 21 x 27 cm. Musée Picasso, Paris. Dation 1979. Sketchbook 1066.

OPP.63:178; MPP:1886.c1; BL.96:56.c1





Nu assis et tête de cheval I. Mougins. 10-February/1963. Pencil. 21 x 27 cm. Musée Picasso, Paris. Dation 1979. Sketchbook 1066.

OPP.63:179; MPP:1886.01r; PP.63:012;
Z.XXIII:120; BL.96:56.1r; LU.93:422

L'atelier: le peintre et son modèle II.
Mougins. 10-February/1963. Pencil. 21 x 27 cm. Musée Picasso, Paris. Dation 1979. Sketchbook 1066.

OPP.63:180; MPP:1886.02r; PP.63:013;
Z.XXIII:122; BL.96:56.2r; GS.83:10a;
KK.93:29





L'atelier: le peintre et son modèle V. Mougins. 10-February/1963. Pencil & rubbings. 21 x 27 cm. Musée Picasso, Paris. Dation 1979. Sketchbook 1066.

OPP.63:181; MPP:1886.03r; PP.63:016;
Z.XXIII:125; BL.96:56.3r; GS.83:10d

L'atelier: le peintre et son modèle III. Mougins. 10-February/1963. Pencil. 21 x 27 cm. Musée Picasso, Paris. Dation 1979. Sketchbook 1066.

OPP.63:182; MPP:1886.04r; PP.63:014;
Z.XXIII:123; BL.96:56.4r; GS.83:10b;
KK.93:30; TO.14:21p





L'atelier: le peintre et son modèle IV. Mougins. 10-February/1963. Pencil. 21 x 27 cm. Musée Picasso, Paris. Dation 1979. Sketchbook 1066.

OPP.63:183; MPP:1886.05r; PP.63:015; Z.XXIII:124; BL.96:56.5r; GS.83:10c

L'atelier: le peintre et son modèle. Mougins. 10-February/1963. Pencil & rubbings. 21 x 27 cm. Musée Picasso, Paris. Dation 1979. Sketchbook 1066.

OPP.63:583; MPP:1886.03v; BL.96:56.3v



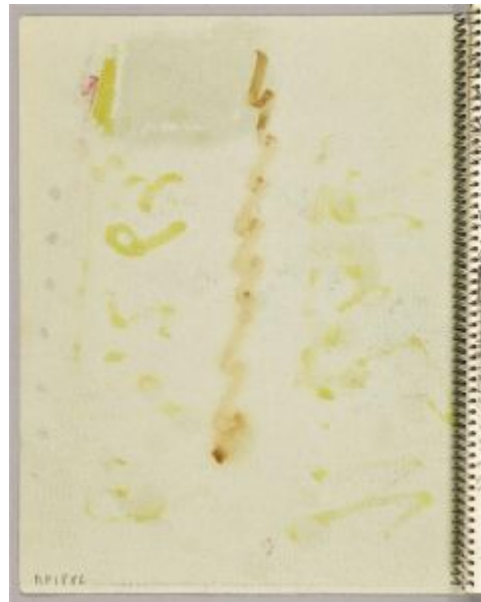


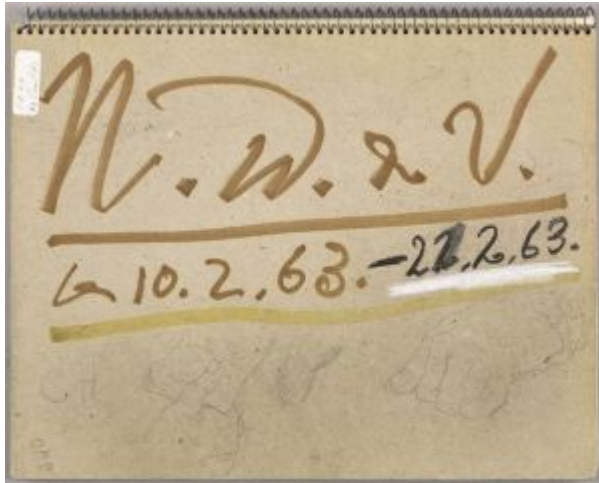
L'atelier: le peintre et son modèle. Mougins. 10-February/1963. Pencil. 21 x 27 cm. Musée Picasso, Paris. Dation 1979. Sketchbook 1066.

OPP.63:584; MPP:1886.04v; BL.96:56.4v

2e de couverture. Mougins. 10-February/1963. Gouache, black crayon & blue crayon. 21 x 27 cm. Musée Picasso, Paris. Dation 1979. Sketchbook 1066.

OPP.63:589; MPP:1886.c2; BL.96:56.c2





4o de couverture et études de mains. Mougins. 10~21-February/1963. Watercolor & pencil. 21 x 27 cm. Musée Picasso, Paris. Dation 1979. Sketchbook 1066.

OPP.63:210; MPP:1886.c4; BL.96:56.c4

L'atelier: le peintre et son modèle II. Mougins. 11-February/1963. Pencil. 21 x 27 cm. Musée Picasso, Paris. Dation 1979. Sketchbook 1066.

OPP.63:185; MPP:1886.07r; PP.63:018; Z.XXIII:127; BL.96:56.7r; GS.83:10f





L'atelier: le peintre et son modèle III.

Mougins. 11-February/1963. Pencil. 21 x 27 cm. Musée Picasso, Paris. Dation 1979. Sketchbook 1066.

OPP.63:186; MPP:1886.08r; PP.63:019; Z.XXIII:128; BL.96:56.8r

L'atelier: le peintre et son modèle.

Mougins. 11-February/1963. Pencil, color pencils & wax crayons. 21 x 27 cm. Musée Picasso, Paris. Dation 1979. Sketchbook 1066.

OPP.63:586; MPP:1886.06v; BL.96:56.06v





L'atelier: le peintre et son modèle. Mougins.
11-February/1963. Pencil. 21 x 27 cm. Musée
Picasso, Paris. Dation 1979. Sketchbook 1066.

OPP.63:587; MPP:1886.07v; BL.96:56.07v

L'atelier: le peintre et son modèle I.
Mougins. 11, 16-February/1963. Pencil,
color pencils & wax crayons. 21 x 27 cm.
Musée Picasso, Paris. Dation 1979.
Sketchbook 1066.

OPP.63:184; MPP:1886.06r; PP.63:017;
Z.XXIII:126; BL.96:56.6r; GS.83:10e





Femme assise. Mougins. 11-February~3-September/1963.
Oil on canvas [Oic]. 146 x 114 cm. Private collection.

OPP.63:441; PP.63:198; Z.XXIII:152

Le peintre et son modèle I. Mougins. 12-February/1963. Pencil. 21 x 27 cm. Musée Picasso, Paris. Dation 1979. Sketchbook 1066.

OPP.63:187; MPP:1886.09r; PP.63:020;
Z.XXIII:129; BL.96:56.9r





Le peintre et son modèle II. Mougins. 12-February/1963. Pencil. 21 x 27 cm. Musée Picasso, Paris. Dation 1979. Sketchbook 1066.

OPP.63:188; MPP:1886.10r; PP.63:021;
Z.XXIII:130; BL.96:56.10r

Le peintre et son modèle II. Mougins. 14-February/1963. Color pencils & wax crayons. 21 x 27 cm. Musée Picasso, Paris. Dation 1979. Sketchbook 1066.

OPP.63:190; MPP:1886.12r; PP.63:023;
Z.XXIII:132; BL.96:56.12r





Buste de femme III. Mougins. 14-February/1963. Pencil. 21 x 27 cm. Musée Picasso, Paris. Dation 1979. Sketchbook 1066.

OPP.63:191; MPP:1886.13r; PP.63:024;
Z.XXIII:133; BL.96:56.13r; LE.21*:267

L'atelier: le peintre et son modèle.

Mougins. 14-February/1963. Pencil, color pencil & wax crayon. 21 x 27 cm. Musée Picasso, Paris. Dation 1979. Sketchbook 1066.

OPP.63:588; MPP:1886.11v;
BL.96:56.11v



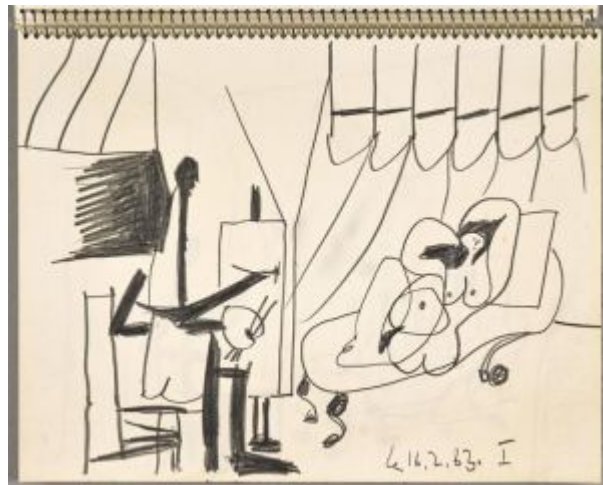


Peintre et singe. Mougins. 14-February~16-December/1963. Pencil, color pencil & wax crayon. 21 x 27 cm. Musée Picasso, Paris. Dation 1979. Sketchbook 1066.

OPP.63:189; MPP:1886.11r; PP.63:022;
Z.XXIII:131; BL.96:56.11r

L'atelier: le peintre et son modèle I.
Mougins. 16-February/1963. Pencil. 21 x 27 cm. Musée Picasso, Paris. Dation 1979. Sketchbook 1066.

OPP.63:192; MPP:1886.14r; PP.63:025;
Z.XXIII:134; BL.96:56.14r





L'atelier: le peintre et son modèle II. Mougins. 16-February/1963. Pencil. 21 x 27 cm. Musée Picasso, Paris. Dation 1979. Sketchbook 1066.

OPP.63:193; MPP:1886.15r; PP.63:026;
Z.XXIII:135; BL.96:56.15r

L'atelier: le peintre et son modèle III. Mougins. 16-February/1963. Pencil. 21 x 27 cm. Musée Picasso, Paris. Dation 1979. Sketchbook 1066.

OPP.63:194; MPP:1886.16r; PP.63:027;
Z.XXIII:136; BL.96:56.16r





L'atelier: le peintre et son modèle IV. Mougins. 16-February/1963. Pencil. 21 x 27 cm. Musée Picasso, Paris. Dation 1979. Sketchbook 1066.

OPP.63:195; MPP:1886.17r; PP.63:028; Z.XXIII:137; BL.96:56.17r

L'atelier: le peintre et son modèle V. Mougins. 16-February/1963. Pencil. 21 x 27 cm. Musée Picasso, Paris. Dation 1979. Sketchbook 1066.

OPP.63:196; MPP:1886.18r; PP.63:029; Z.XXIII:138; BL.96:56.18r; TO.14:21p





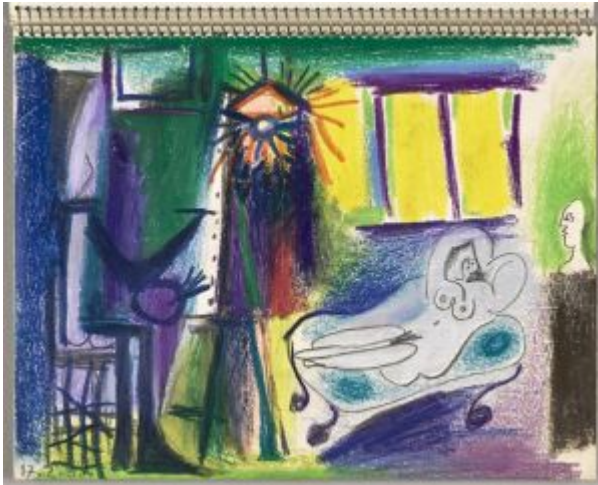
L'atelier: le peintre et son modèle VI. Mougins. 16-February/1963. Pencil, color pencil & wax crayon. 21 x 27 cm. Musée Picasso, Paris. Dation 1979. Sketchbook 1066.

OPP.63:197; MPP:1886.19r; PP.63:030; Z.XXIII:139; BL.96:56.19r; TO.14:21p

La chumbera (Para Reme). Mougins. 16-February/1963. Wax crayons on cut-out paper. 64,5 x 44 cm. Christie's. #251, 7601, 06/25/08. Formerly Lucia Bosé Collection.

OPP.63:242; BA.18*:44p; TE.01*:33p





L'atelier: le peintre et son modèle. Mougins. 17-February/1963. Pencil, color pencil & wax crayon. 21 x 27 cm. Musée Picasso, Paris. Dation 1979. Sketchbook 1066.

OPP.63:198; MPP:1886.20r; PP.63:031; Z.XXIII:140; BL.96:56.20r

L'atelier: le peintre et son modèle II. Mougins. 17-February/1963. Pencil, color pencil & wax crayons. 21 x 27 cm. Musée Picasso, Paris. Dation 1979. Sketchbook 1066.

OPP.63:199; MPP:1886.21r; PP.63:032; Z.XXIII:141; BL.96:56.21r





L'atelier: le peintre et son modèle III.

Mougins. 17-February/1963. Pencil, color pencil & wax crayons. 21 x 27 cm. Musée Picasso, Paris. Dation 1979. Sketchbook 1066.

OPP.63:200; MPP:1886.22r; PP.63:033;
Z.XXIII:142; BL.96:56.22r

Tête d'homme au chapeau IV. Mougins.
17-February/1963. Pencil. 21 x 27 cm.
Musée Picasso, Paris. Dation 1979.
Sketchbook 1066.

OPP.63:201; MPP:1886.23r; PP.63:034;
Z.XXIII:143; BL.96:56.23r





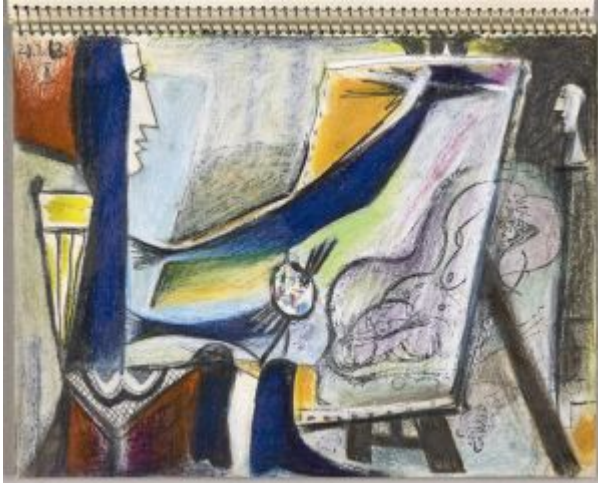
L'atelier: le peintre et son modèle. Mougins. 18-February/1963. Pencil, color pencils & wax crayons. 21 x 27 cm. Musée Picasso, Paris. Dation 1979. Sketchbook 1066.

OPP.63:202; MPP:1886.24r; PP.63:035; Z.XXIII:144; BL.96:56.24r

L'atelier: le peintre et son modèle I. Mougins. 20-February/1963. Pencil. 21 x 27 cm. Musée Picasso, Paris. Dation 1979. Sketchbook 1066.

OPP.63:203; MPP:1886.25r; PP.63:036; Z.XXIII:145; BL.96:56.25r





L'atelier: le peintre et son modèle II. Mougins. 20-February/1963. Pencil, color pencils & wax crayons. 21 x 27 cm. Musée Picasso, Paris. Dation 1979. Sketchbook 1066.

OPP.63:204; MPP:1886.26r; PP.63:037;
Z.XXIII:146; BL.96:56.26r; TO.14:21p



L'atelier: le peintre et son modèle III. Mougins. 20-February/1963. Pencil, color pencils & wax crayons. 21 x 27 cm. Musée Picasso, Paris. Dation 1979. Sketchbook 1066.

OPP.63:205; MPP:1886.27r; PP.63:038;
Z.XXIII:147; BL.96:56.27r



L'atelier: le peintre IV. Mougins. 20-February/1963. Pencil, color pencils & wax crayons. 21 x 27 cm. Musée Picasso, Paris. Dation 1979. Sketchbook 1066.

OPP.63:206; MPP:1886.28r; PP.63:039; Z.XXIII:148; BL.96:56.28r

L'atelier: le peintre et son modèle. Mougins. 20-February/1963. Pencil, color pencils & wax crayons. 21 x 27 cm. Musée Picasso, Paris. Dation 1979. Sketchbook 1066.

OPP.63:585; MPP:1886.26v; BL.96:56.26v





L'atelier: le peintre I. Mougins. 21-February/1963. Pencil, color pencils & wax crayons. 21 x 27 cm. Musée Picasso, Paris. Dation 1979. Sketchbook 1066.

OPP.63:207; MPP:1886.29r; PP.63:040; Z.XXIII:149; BL.96:56.29r

L'atelier: le peintre II. Mougins. 21-February/1963. Pencil, color pencils & wax crayons. 21 x 27 cm. Musée Picasso, Paris. Dation 1979. Sketchbook 1066.

OPP.63:208; MPP:1886.30r; PP.63:041; Z.XXIII:150; BL.96:56.30r





Le peintre. Mougins. 22-February/1963. Oil on canvas. 97 x 130 cm. Helly Nahmad Collection, Monaco/London. Formerly Galerie Louise Leiris, Paris.

OPP.63:270; PP.63:042; Z.XXIII:151;
CB.11*:191p; GS.83*:3; HN.13*:281p;
HP.65:18p; LO.98b*:n/a; PD.77:386p; RT.99*:78;
WS.07*:23; WS.93*:144

Le peintre et son modèle. Mougins. 22-February/1962. Oil on canvas. S/U. Private collection.

OPP.63:331; HP.65:19p





Palmiers sous un ciel gris. Mougins. 22-February/1963. Green, gray and brown colored pencil on paper. 21 x 27 cm. Piasa. #25, 2142, 02/15/24. Formerly Max Pellequer Collection.

OPP.63:610

Le peintre dans l'atelier. Mougins. 22-February~17-September/1963. Oil on canvas. 89 x 116 cm. Galerie Louise Leiris, Paris.

OPP.63:370; PP.63:218; Z.XXIII:153; GL.64*:18; GS.83:4; WS.93*:145





Carnaval. Mougins. 26-February/1963. Color print published in Le Patriote no. 48 [After *Le vieux roi*. S/U. Private collection.

OPP.63:596; PP.63:043

Le peintre et son modèle I. Mougins. 2-March/1963. Oil on canvas. [38 x 46] 37,5 x 45 cm. Kunst Museum of St. Gallen. (Inv 1999.19). Donation from the Erna and Curt Burgauer Collection, 1999.

OPP.63:154; PP.63:044; Z.XXIII:154; HP.65:20p; VO.16*:131p; WW.91:590p





Le peintre et son modèle II. Mougins. 2-March/1963. Oil on canvas. 73 x 92 cm. Private collection.

OPP.63:155; PP.63:045; Z.XXIII:155; HP.65:20p; PE.01a*:65; TB.01*:4; TB.02*:4; WW.91:590p

Le peintre et son modèle III. Mougins. 2-March/1963. Oil on canvas. 72,5 x 91,5 cm. Private collection. Formerly Christie's. #L65, 05/26/89.

OPP.63:156; PP.63:046; Z.XXIII:156; HP.65:21p; WW.91:590p





Le peintre et son modèle IV. Mougins. 2-March/1963. Oil on canvas. [72,5 x 91,5] 73 x 92 cm. Helly Nahmad Collection, Monaco/London. Formerly Christie's. #0072, 1831, 05/09/07.

OPP.63:157; PP.63:047; Z.XXIII:157;
GL.64*:20; HN.13*:283p; HP.65:21p;
WW.91:590p

Nu assis et personnage III. Mougins. 2-March/1963. Pencil on paper. 37,1 x 27 cm. Sotheby's. #427, N09416, 11/06/15.

OPP.63:372; PP.63:124; Z.XXIII:241





Le peintre et son modèle I. Mougins. 3~4-March/1963. Oil on canvas. 50 x 108 [107] cm. Private collection.

OPP.63:165; PP.63:048; Z.XXIII:158; HP.65:22p; WW.91:582p

Le peintre et son modèle II. Mougins. 3~4-March/1963. Oil on canvas. 50 x 108 [107] cm. Christie's. #38C, 12069, 05/12/16.

OPP.63:166; PP.63:049; Z.XXIII:160; GL.64*:22; HP.65:23p; WW.91:582p





Le peintre et son modèle. Mougins. 4~5-March/1963. Oil on canvas. 81 x 100 cm. Helly Nahmad Collection, Monaco/London. Formerly Sotheby's. #L53, 12/03/91; Marina Picasso Collection. (Inv 13459).

OPP.63:245; PP.63:050; Z.XXIII:159;
AU.89*:58; GS.83*:5; GS.85*:140;
HN.13*:285p; TG.88*:23; UP.00:1080

Le peintre et son modèle. Mougins. 5-March/1963. Oil on canvas. S/U. Private collection.

OPP.63:332; HP.65:24p; TO.14:96p





Le peintre et son modèle II. Mougins. 5-March, 20~22-May, 16-June, 13-August/1963. Oil on canvas. 89 x 116 cm. Helly Nahmad Collection, Monaco/London.

OPP.63:290; PP.63:181; Z.XXIII:162;
HN.13*:299p; HP.65:27p; LO.98b*:n/a;
PE.01a*:67; RT.99*:79

Le peintre et son modèle IIIa. Mougins. 5-March [~11-September]/1963. Oil on canvas [Early state of *Le peintre et son modèle IIIb*]. 89 x 116 cm. Private collection.

OPP.63:152; HP.65:28p; TO.14:96p;
WW.91:591p





Le peintre et son modèle IIIb. Mougins. 5-March~11-September/1963. Oil on canvas [Later state of *Le peintre et son modèle IIIa*]. 89 x 115,9 [116] cm. Artizon Museum, Tokyo. Ishibashi Foundation.

OPP.63:153; PP.63:212; Z.XXIII:163; HP.65:29p; PE.01a*:68; TI.71:73; TO.14*:115; WW.91:591p

Le peintre et son modèle. Mougins. 5-March~20-September/1963. Oil on canvas. 89 x 116,5 cm. The Hakone Open-Air Museum, Japan.

OPP.63:244; PP.63:220; Z.XXIII:161; GL.64*:23; HP.65:25p; PE.01a*:66; TG.88*:24; TO.14:95p; UP.00:1078





Le peintre et son modèle II. Mougins. 6-March/1963. Oil on canvas. 40 x 55 cm. Private collection.

OPP.63:334; PP.63:051; Z.XXIII:164;
GL.64*:25; HP.65:31p

Le peintre et son modèle. Mougins. 6~7-March/1963. Oil on canvas. 80,7 x 101 cm. Private collection.

OPP.63:333; HP.65:30p





Le peintre et son modèle I. Mougins. 7-March/1963. Oil on canvas. 46 x 55,2 cm. Helly Nahmad Collection, Monaco/London. Formerly Sotheby's. #54, N08195, 05/03/06.

OPP.63:128; PP.63:052; Z.XXIII:165;
GL.64*:26; HN.13*:297p; HP.65:32p

Le peintre et son modèle II. Mougins. 7-March/1963. Oil on canvas. 38 x 46 cm. Private collection.

OPP.63:335; PP.63:053; Z.XXIII:166;
GL.64*:27; HP.65:32p





Le peintre et son modèle III. Mougins. 7~8-March/1963. Oil on canvas. [38 x 46] 38,2 x 46,4 cm. Helly Nahmad Collection, Monaco/London.

OPP.63:291; PP.63:054; Z.XXIII:167;
HN.13*:289p; HP.65:33p; JL.64:28; LO.98b*:n/a;
PE.01a*:69; RT.99*:82

L'enlèvement des Sabines (d'après Poussin et David) (Étude). Mougins. 8-March/1963. Pencil on page of the book Jaume Sabartés, A Los Toros avec Picasso. 24,5 x 31,5 cm. Sotheby's. #234, L03005, 06/24/03.

OPP.63:074





Le peintre et son modèle II. Mougins. 8-March/1963. Oil on canvas. 96 x 132 cm. Private collection.

OPP.63:161; HP.65:34p; WW.91:584p

Le peintre et son modèle. Mougins. 8-March/1963. Oil on canvas. 38 x 46 cm. Private collection. Formerly Sotheby's. #66, 04/04/89.

OPP.63:336; PP.63:055; Z.XXIII:168; GL.64*:29; HP.65:33p





Le peintre et son modèle. Mougins. [8-March~] 16-May/1963. Oil on canvas. [97 x 130] 96 x 132 cm. Private collection.

OPP.63:162; PP.63:150; Z.XXIII:169; HP.65:35p; WW.91:584p

Tête d'homme, profil II. Mougins. 9-March/1963. Oil on canvas. [65 x 54] 63,5 x 53,3 cm. Private collection, Houston. Formerly On Loan The Museum of Fine Arts, Houston; Michelle Rosenfeld Gallery. 2010; Helly Nahmad Gallery, London; Christie's. #58, 05/25/96.

OPP.63:264; PP.63:056; Z.XXIII:173; HP.65:38p; LO.98b*:n/a; NY.05c*:n/a; PS.08*:n/a; RO.90*:n/a; RT.99*:83; WA.15*:n/a





Tête d'homme III. Mougins. 9-March/1963. Oil on canvas.
65 x 54 cm. Private collection.

OPP.63:337; PP.63:057; Z.XXIII:174; HP.65:38p

Le peintre et son modèle (1er état).
Mougins. 9-March [~31-May]/1963. Oil on
canvas [First stage of *Le peintre et son
modèle (2ème état)*]. 65 x 80,5 cm. Private
collection.

OPP.63:150; HP.65:36p; WW.91:591p





Le peintre et son modèle (2ème état).

Mougins. 9~31-March [31-May]/1963. Oil on canvas [Second stage of *Le peintre et son modèle (1er état)*]. 65 x 80,5 cm. Private collection.

OPP.63:151; PP.63:169; Z.XXIII:170; HP.65:37p; MM.67:77; PC.66:53p; WW.91:591p

Le peintre II. Mougins. 10-March/1963. Oil on canvas. 61 x 50,1 [50] cm. Helly Nahmad Collection, Monaco/London. Formerly Christie's. #20, 6590, 06/25/02.

OPP.63:049; PP.63:059; Z.XXIII:176; HN.13*:291p; HP.65:44p; WW.91:594p





Le peintre. Mougins. 10-March/1963. Oil on canvas. 61 x 50 cm. Private collection.

OPP.63:115; PP.63:058; Z.XXIII:175; HP.65:44p;
WW.91:594p

Le peintre III. Mougins. 10~12-March/1963. Oil on canvas. 100 x 73 cm. Wadsworth Atheneum Museum of Art, Hartford, CT. Formerly Dr. Herschel Carey Walker Collection, NY.

OPP.63:001; PP.63:064; Z.XXIII:177; EG.66*:47p;
HP.65:39p; MF.01*:47; WW.91:594p





L'enlèvement des Sabines (d'après Poussin et David) (Étude) (I).
Mougins. 11-March/1963. Pencil on paper. [22,5 x 10,5] 22,3 x 10,6 cm.
Sotheby's. #590, L16005, 02/05/16. Formerly Marina Picasso Collection.

OPP.63:318; PP.63:060; Z.XXIII:181; FB.13*:n/a; JR.93*:99; LU.93:360;
NY.89a*:50; PE.01a*:108

L'enlèvement des Sabines (d'après Poussin et David) (Étude) (III).
Mougins. 11-March/1963. Pencil on paper. 22,5 x 10,5 cm.
Sotheby's. #97, N09727, 05/18/17. Formerly Marina Picasso Collection.

OPP.63:319; PP.63:062; Z.XXIII:183; FB.13*:n/a; NY.89a*:51;
PE.01a*:109





L'enlèvement des Sabines (d'après Poussin et David) (Étude) (IV). Mougins. 11-March/1963. Pencil on paper. [10,5 x 22,5] [10,6 x 22,4] 10,7 x 22,2 cm. Sotheby's. #101, N09727, 05/18/17. Marina Picasso Collection.

OPP.63:320; PP.63:063; Z.XXIII:184;
FB.13*:n/a; PE.01a*:110

L'enlèvement des Sabines II (d'après Poussin et David). Mougins. 11-March/1963. Graphite on paper. 22,5 x 11 cm. Private collection.

OPP.63:442; PP.63:061; Z.XXIII:182





Rembrandt et Saskia. Mougins. 13 [~14-March]/1963. Oil on canvas. 130 x 162 cm. Private collection.

OPP.63:007; PP.63:065; Z.XXIII:171; DC.87:424; GB.87:264; GT.10:93.1; HP.65:41p; MF.01:56p; MF.10:79p; MM.00:88p; TG.88:61; WW.91:585p

Le peintre. Mougins. 14-March/1963. Color pencil. 22,5 x 10,7 cm. Private collection.

OPP.63:272; PP.63:066; Z.XXIII:191; GR.73:28p; WS.07:273p





Nu allongé. Mougins. 14-March/1963. Pastel & pencil. S/U. Private collection.

OPP.63:327; HP.64:7p

Le peintre dans son atelier (1er état).
Mougins. [14~15-March~] 4-April/1963.
Oil on canvas [First stage of *Le peintre dans son atelier (2ème état)*]. 60 x 93 [92] cm. Yale University Art Gallery. (Inv 2006.52.23). Charles B. Benenson, B.A. 1933 Collection.

OPP.63:163; HP.65:42p; WW.91:583p





Le peintre dans son atelier (2ème état).

Mougins. 14~15-March, 4-April, 13-May, 4-June/1963. Oil on canvas [Second stage of *Le peintre dans son atelier (1er état)*]. 60 x 93 [92] cm. Yale University Art Gallery. (Inv 2006.52.23). Charles B. Benenson, B.A. 1933 Collection.

OPP.63:164; PP.63:078; Z.XXIII:172; HP.65:43p; SF.09*:33; WW.91:583p

Le petit bijou (Pour Pic). Mougins. 15-March/1963. Pastel & pencil. 3 x 11 cm. The Andipa Gallery. 2007. Formerly Sims Reed Gallery.

OPP.63:175; LO.07b*:n/a





Le peintre II. Mougins. 16-March/1963. Oil on canvas. 92 x 65 cm. Galerie Louise Leiris, Paris.

OPP.63:246; PP.63:068; Z.XXIII:179; AU.89*:57; HP.65:45p

Le peintre I. Mougins. 16-March/1963. Oil on canvas. [65 x 54] 64,8 x 53,9 cm. Sotheby's. #133, N10459, 10/28/20.

OPP.63:338; PP.63:067; Z.XXIII:180; HP.65:45p





Le peintre et son modèle dans l'atelier (1er état). Mougins. 17-March/1963. Oil on canvas [Earlier state of *Le peintre et son modèle dans l'atelier (2ème état)*]. 65 x 92 cm. Musée National d'Art Moderne, Centre Georges Pompidou, Paris.

OPP.63:121; HP.65:46p; TO.14:96p;
WW.91:592p

Le peintre et son modèle dans l'atelier (3ème état). Mougins. 17, 18, 19, 21, 22, 23, 24, 25, 26-March~1, 9-April/1963. Oil on canvas. 65 x 92 cm. Musée National d'Art Moderne, Centre Georges Pompidou, Paris. (Inv AM.1984.640). Donation Louise et Michel Leiris, 1984.

OPP.63:123; PP.63:089; Z.XXIII:205;
BA.22:59p; BP.21:93p; DC.87:426;
DU.95*:99p; HP.65:47p; JB.08:150-151p;
KG.71:274; KG.85:274; PD.09:427p;
PE.01a*:70; TG.88*:25; TO.14*:111;
TO.99*:180; UP.00:1076; WW.91:592p





Le peintre et son modèle dans l'atelier (2ème état). Mougins. 20-March/1963. Oil on canvas [Second state of *Le peintre et son modèle dans l'atelier (1er état)*]. 65 x 92 cm. Musée National d'Art Moderne, Centre Georges Pompidou, Paris.

OPP.63:122; HP.65:46p; TO.14:96p;
WW.91:592p

Le peintre. Mougins. 21-March/1963. Oil on canvas [Oic]. 92 x 65 cm. Private collection.

OPP.63:357; PP.63:069; Z.XXIII:178





Déjeuner sur l'herbe (Pour Margaret). Mougins. 23-March/1963. Crayon on paper. 36 x 53 cm. Private collection.

OPP.63:298

Masque (Pour Gro). Mougins. 23-March/1963. Color chalks on card [OIC]. 26 x 20 cm. Private collection. Formerly Christie's. #226, 11/29/93.

OPP.63:597; PP.63:070





Le peintre dans son atelier II. Mougins. 25-March/1963. Oil on canvas. 65 x 92 cm. Private collection.

OPP.63:339; PP.63:071; Z.XXIII:189;
GL.64*:35; HP.65:48p

Le peintre et son modèle I. Mougins. 26-March/1963. Oil on canvas. 130 x 162 cm. Esther Grether Family Collection. Formerly Helly Nahmad Collection, Monaco/London.

OPP.63:316; PP.63:072; Z.XXIII:190;
BS.23b*:n/a; GL.64*:36; HP.65:50p;
PE.01a*:71



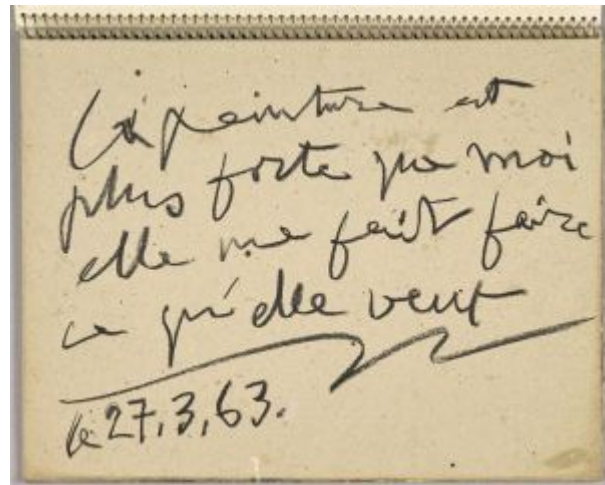


Le peintre et son modèle II. Mougins. 26-March/1963. Oil on canvas. 130 x 162 cm. Sotheby's. #22, N09567, 11/14/16.

OPP.63:340; PP.63:073; Z.XXIII:193; GL.64*:37; HP.65:51p

3o de couverture. Mougins. 27-March/1963. Wax crayon. 21 x 27 cm. Musée Picasso, Paris. Dation 1979. Sketchbook 1066.

OPP.63:209; MPP:1886.c3; BL.96:56.c3; DW.05:134p; GA.00:45p; MF.01:15p





Le peintre et son modèle. Mougins. 27-March/1963. Oil on canvas. 130 x 162 cm. Private collection.

OPP.63:341; PP.63:074; Z.XXIII:194;
GL.64*:38; HP.65:52p

Le peintre et son modèle. Mougins. 28-March~7-May/1963. Oil on canvas. 130 x 162 cm. Helly Nahmad Collection, Monaco/London. Formerly Sotheby's. #38, L06007, 06/19/06; Galerie Beyeler.

OPP.63:149; PP.63:134; Z.XXIII:195;
BS.23b*:n/a; BS.65b*:32; BS.67a*:47;
CB.11*:193p; DQ.74:36-37p; GE.67b*:1;
GL.64*:39; GP.96:350p; HN.13*:297p;
HP.65:53p; HU.68*:102; KG.71:276;
KG.85:276; MM.67:78-79; PA.66j*:n/a;
PC.66:58p; PD.09:426p; RE.66*:n/a;
UP.00:1081; WW.91:594p





Le peintre et son modèle. Mougins. 29-March~1-April [~7-May]/1963. Oil on canvas. [130 x 195,5] [130 x 162] 130 x 161 cm. Museo Nacional Centro de Arte Reina Sofía, Madrid. (Inv AS02034). Formerly Private collection, NY.

OPP.63:003; PP.63:076; Z.XXIII:196; FP.73:331p; GP.96:349p; HP.65:55p; JL.06:215p; JL.71:191p; KG.71:277; KG.85:277; PC.77:518p; PE.01a*:72; WW.91:593p

Le peintre II. Mougins. 30-March/1963. Oil on canvas. 92 x 73 cm. Private collection.

OPP.63:116; PP.63:075; Z.XXIII:198; HP.65:59p; TO.14:92p; WW.91:615p





Dédicace (Pour Jean Leymarie). Mougins. 30-March/1963. Ballpoint ink. S/U. Artcurial. #338, 1567, 05/14/09.

OPP.63:253

Le peintre et son modèle I. Mougins. 30[~31]-March~3-September/1963. Oil on canvas. 130 x 162 cm. Museo Nacional Centro de Arte Reina Sofia, Madrid. (Inv ASO.2035).

OPP.63:119; PP.63:197; Z.XXIII:197; AC.81:137p; AP.11:134p; DA.03:64; GB.87:299; HP.65:57p; PE.01a*:73; TO.14*:113; UP.00:1079; WW.91:595p





Buste de femme au chapeau I. Mougins. 2-
April/1963. Color pencil over poster [After *Buste de
femme au chapeau (Jacqueline)*] [OïC]. 43,5 x 39,7 cm.
Private collection. Formerly Sotheby's. #242, 05/15/85.

OPP.63:598; PP.63:077

Le peintre et son modèle. Mougins. 2, 6-
April/1963. Oil on canvas. 130 x 195 cm.
Private collection. Formerly Christie's.
#528, 05/09/00.

OPP.63:273; PP.63:084; Z.XXIII:200;
GL.64*:43; HP.65:60p; JM.93:122-123p;
PD.69:98p; RS.88:170-171p





Jacqueline III. Mougins. 2, 8-April/1963. Pastels & gouache on poster. 67 x 44 cm. Catherine Hutin-Blay Collection, Paris. Formerly Jacqueline Roque Picasso Collection.

OPP.63:550; PD.19*:15

Le peintre et son modèle. Mougins. 3, 4, 6, 7, 8-April/1963. Oil on canvas. 130 x 195 cm. Museo Nacional Centro de Arte Reina Sofia, Madrid. (Inv ASO.2033).

OPP.63:002; PP.63:085; Z.XXIII:202; BA.23*:54p; FM.84:33p; FP.73:332p; GP.96:352p; HD.01:64; HP.65:61p; MF.01*:48; PD.09:426p; PE.01a*:74; TO.14*:112; TO.99*:181; UP.00:1077; WS.07*:21; WS.11:365p; WS.93*:146; WW.91:593p





Tête de faune heureux (Pour Dante Alberti). Mougins. 4-April/1963. Colored crayons on paper laid down on card. [42 x 26] 43,2 x 25,4 cm. Sotheby's. #23, PF1306, 06/06/13. Formerly Sotheby's. #98, W03703, 03/20/03.

OPP.63:059

Nu couché II. Mougins. 6-April/1963. Pastel & graphite pencil inside unfolded box of colors Lefranc. 17 x 21 cm. Musée Picasso, Paris. Dation 1979.

OPP.63:258; MPP:1537; PP.63:083; Z.XXIII:192; PA.21f*:162





Nu assis I. Mougins. 6-April/1963. Graphite on paper. 23 x 11 cm. Private collection.

OPP.63:443; PP.63:079; Z.XXIII:185



Nu assis III. Mougins. 6-April/1963. Graphite on paper. 23 x 11 cm. Private collection.

OPP.63:444; PP.63:080; Z.XXIII:186



Nu assis IV. Mougins. 6-April/1963. Graphite on paper. 23 x 11 cm. Private collection.

OPP.63:445; PP.63:081; Z.XXIII:187



Nu assis V. Mougins. 6-April/1963. Graphite on paper. 23 x 11 cm. Private collection.

OPP.63:446; PP.63:082; Z.XXIII:188



98 Lithographies Originales (Para mi amigo Arias). Mougins. 8-April/1963. Offset lithograph [After *Buste de femme au chapeau (Jacqueline)*]. 66 x 43 cm. Museo Picasso, Colección Eugenio Arias, Buitrago del Lozoya. (Inv 42).

OPP.63:215; JR.90:42

Le peintre et son modèle IV. Mougins. 8-April/1963. Oil on canvas. [73 x 92] 72,4 x 92,1 cm. Helly Nahmad Collection, Monaco/London. Formerly Christie's. #290, 05/13/93; Christie's. #643, 9358, 05/10/00; Christie's. #85, 05/10/89.

OPP.63:265; PP.63:088; Z.XXIII:203; HN.13*:295p; PE.01a*:76





Le peintre et son modèle II. Mougins. 8-April/1963. Oil on canvas. 73 x 92 cm. Sotheby's. #70, L14002, 02/05/14. Formerly Helly Nahmad Collection, Monaco/London; Sotheby's. #49, 12/01/92.

OPP.63:289; PP.63:086; Z.XXIII:199;
HN.13*:293p; LO.07d*:n/a; LO.98b*:n/a;
PE.01a*:75; RT.99*:80

Le peintre et son modèle III. Mougins. 8-April/1963. Oil on canvas. 73 x 92 cm. Christie's. #33C, 3783, 11/12/15.

OPP.63:374; PP.63:087; Z.XXIII:201





Le peintre et son modèle. Mougins. 9-April/1963. Oil on canvas. [50,2 x 73] 50 x 72,8 cm. Sotheby's. #11, PF1816, 10/18/18.

OPP.63:342; PP.63:090; Z.XXIII:204; HP.65:62p; TR.10*:97

Note autographe à Inès Sassier.

Mougins. 10-April/1963. Ink. S/U. Artcurial. #322, 1331, 10/22/07. Formerly Inès and Gérard Sassier Collection.

OPP.63:237

mon N.D. de Vie - Mougins
le 10.4.63. A.M.
ma chère Inès -
voici le cheque n.
postes 4000 Mougins
de France.
Merci
à vous en bas
le peintre et ceram. Picasso



Le peintre et son modèle I. Mougins. 10-April/1963. Oil on canvas. 73 x 100 cm. Christie's. #643, 21961, 05/13/23. Formerly Sotheby's. #81, 12/02/86.

OPP.63:448; PP.63:091; Z.XXIII:206

Le peintre et son modèle II. Mougins. 10~15-April/1963. Oil on canvas. 73 x 100 cm. Private collection.

OPP.63:343; PP.63:094; Z.XXIII:207;
GL.64*:47; HP.65:62p





Le peintre et son modèle I. Mougins. 12-April/1963. Oil on canvas [OïC]. 73 x 100 cm. Private collection.

OPP.63:449; PP.63:092; Z.XXIII:208

Le homard. Mougins. 12-April/1963. Oil pastel on paper. 46 x 64,5 cm. Fundación Almine & Bernard Ruiz-Picasso para el Arte.

OPP.63:452; PP.63:093; Z.XXIII:213; MA.23a*:38





Le peintre et son modèle I. Mougins. 12~16-April/1963. Oil on canvas. [73] 71 x 114,5 cm. Caixa Galicia Foundation, Vigo. Colección Novagalicia Banco.

OPP.63:254; PP.63:095; Z.XXIII:211;
TO.14*:116; YP.13*:62

Le peintre et son modèle II. Mougins. 12~16, 18-April/1963. Oil on canvas [OiC]. 73 x 100 cm. Private collection. Formerly Sotheby's. #84, 05/30/87.

OPP.63:450; PP.63:096; Z.XXIII:210





Le peintre et son modèle III. Mougins. 12-April~27-August/1963. Oil on canvas. 97 x 130 cm. Private collection.

OPP.63:344; PP.63:186; Z.XXIII:209;
GL.64*:48; HP.65:63p

Le peintre et son modèle II. Mougins. 16-April/1963~8, 9, 11, 26, 27-May~4~5-June/1964. Oil on canvas. 73 x 116 cm. Helly Nahmad Collection, Monaco/London. Formerly Peter Nahum At The Leicester Galleries; Christie's. #37, 1370, 05/04/04; Marina Picasso Collection. (Inv 013483).

OPP.63:326; PP.64:191; Z.XXIV:146;
GE.98b*:23; HN.13*:301p; PD.02*:108;
PE.01a*:77





Le peintre et son modèle I. Mougins. 18-April/1963. Oil on canvas. 73 x 116 cm. Church of Perfect Liberty.

OPP.63:317; PP.63:097; Z.XXIII:212;
PE.01a*:78

Tête de diable (Pour Marina et Willy). Mougins. 19-April/1963. Colored crayon on paper. 37,5 x 28,9 cm. Sotheby's. #358, N08024, 11/05/04. Formerly Sotheby's. #442A, 7050, 11/13/97; Marina and Willy Staehelin-Peyer Collection.

OPP.63:093; PP.63:098





Toros y Toreros (Pour Yolande). Mougins. 19-April/1963. Colored crayons on paper. [36,9 x 26,6] 37,2 x 26,6 cm. Sotheby's. #62, PF1316, 12/04/13. Formerly Mayoral Galeria d'Art, Barcelona. 2008; Sotheby's. #340, L05006, 02/09/05.

OPP.63:100

Le peintre et son modèle. Mougins. 19-April/1963. Pastel. S/U. Private collection.

OPP.63:350; HP.65:2p





Jeune femme. Mougins. 22-April~30-May/1963. Oil on canvas. 92 x 60 cm. Museum Sammlung Rosengart, Luzern. Siegfried & Angela Rosengart Collection.

OPP.63:118; PP.63:168; Z.XXIII:219; AP.11:138p; BA.90a*:41; GR.71:21; GS.83*:6; LC.66*:1; LC.71*:n/a; MA.91a*:38; WS.93*:150; WW.91:596p



Nu assis dans un fauteuil III (Jacqueline). Mougins. 23-April/1963. Oil on canvas. 100 x 65 cm. The Albertina, Vienna. (Inv GE103DL). Herbert Batliner Collection. (Inv G155).

OPP.63:114; PP.63:101; Z.XXIII:217; HP.66:75p; PF.10*:135; WS.07*:22; WW.91:622p



Femme aux bras levés I. Mougins. 23-April/1963. Oil on canvas. [81 x 54] 80,7 x 54 x 2,2 cm. Fundación Almine & Bernard Ruiz-Picasso para el Arte.

OPP.63:139; PP.63:099; Z.XXIII:215; HP.66:74p; MA.23a*:20; TB.01*:5; TB.02*:5; WW.91:622p

Femme nue assise dans un fauteuil II. Mougins. 23-April/1963. Oil on canvas. [92 x 73] 100 x 65 cm. Private collection. Courtesy Halcyon Gallery. Formerly Sotheby's. #10, PF8008, 07/02/08; Sotheby's. #58, N08359, 11/07/07.

OPP.63:140; PP.63:100; Z.XXIII:216; BS.65a*:49; HP.66:75p; MI.18*:n/a; VO.16*:146p; WW.91:622p





La modèle. Mougins. 24-April~8-May/1963. Oil on canvas. 116 x 89 cm. Saidenberg Gallery, NY.

OPP.63:302; PP.63:135; Z.XXIII:220; EG.66*:44p;
GL.64*:49; HP.65:65p



Nu assis dans un fauteuil II. Mougins. 25, 26-April/1963. Oil on canvas [OïC]. 116 x 89 cm. Private collection.

OPP.63:453; PP.63:102; Z.XXIII:218



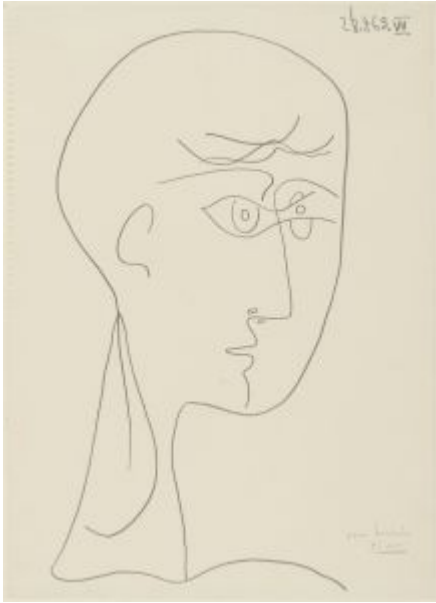
Nu assis dans un fauteuil (Jacqueline). Mougins. 25-April ~ 12, 13, 20-May/1963. Oil on canvas. 116 x 89 cm. Galerie Louise Leiris, Paris.

OPP.63:300; PP.63:167; Z.XXIII:221; BA.90a*:42; GL.89*:24; MA.91a*:39

Paysage méditerranéen. Mougins. 27-April/1963. Oil on canvas. 81 x 130 cm. Christie's. #15, 18339, 02/05/20. Formerly Hélène Bailly Gallery, Paris; Bukowski's (Gregor Aronowitsch). #371, 578, 04/28/14.

OPP.63:353; PP.63:103; Z.XXIII:214; HP.66:77p; ST.88*:88





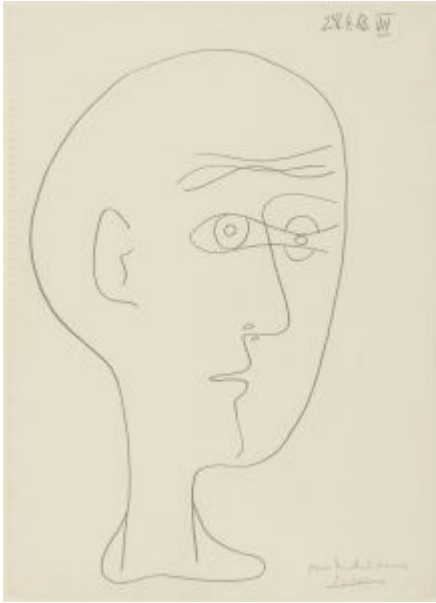
Portrait de Michel Leiris VII. Mougins. 28-April/1963.
[Graphite pencil] Crayon on papier vergé. [37,5] 37,2 x 27 cm.
Musée National d'Art Moderne, Centre Georges Pompidou, Paris.
(Inv AM.1996-371.2). Dation 1996.

OPP.63:102; PP.63:111; Z.XXIII:230

Portrait de Michel Leiris VI. Mougins. 28-April/1963.
[Graphite pencil] crayon on papier vergé. [37,5] 37,2 x 27
cm. Musée National d'Art Moderne, Centre Georges
Pompidou, Paris. (Inv AM.1996-371.1). Dation 1996.

OPP.63:120; PP.63:110; Z.XXIII:229



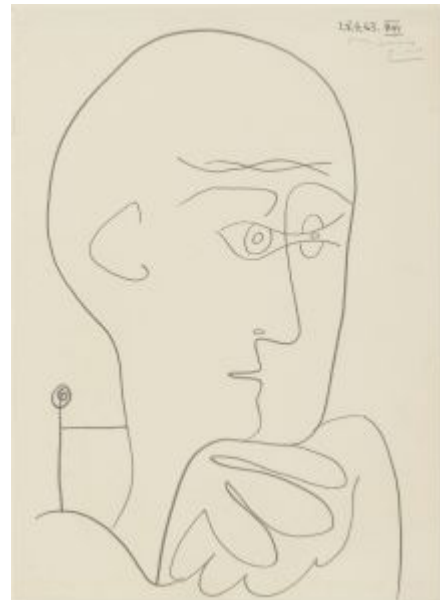


Portrait de Michel Leiris VII. Mougins. 28-April/1963.
[Graphite pencil] crayon on papier vergé. [37,5] 37,2 x 27 cm.
Musée National d'Art Moderne, Centre Georges Pompidou, Paris.
(Inv AM.1996-371.3). Dation 1996.

OPP.63:130; PP.63:112; Z.XXIII:231

Portrait de Michel Leiris VIII. Mougins. 28-April/1963.
[Graphite pencil] crayon on papier vergé. [37,5] 37,2 x 27
cm. Musée National d'Art Moderne, Centre Georges
Pompidou, Paris. (Inv AM.1996-371.4). Dation 1996.

OPP.63:131; PP.63:113; Z.XXIII:232





Portrait de Michel Leiris IX. Mougins. 28-April/1963. Crayon & graphite pencil on papier vergé. [37,5] 37,2 x 27 cm. Musée National d'Art Moderne, Centre Georges Pompidou, Paris. (Inv AM.1996-371.5). Dation 1996.

OPP.63:132; PP.63:114; Z.XXIII:233

Portrait de Michel Leiris X. Mougins. 28-April/1963. [Graphite pencil] crayon on papier vergé. [37,5] 37,2 x 27 cm. Musée National d'Art Moderne, Centre Georges Pompidou, Paris. (Inv AM.1996-371.6). Dation 1996.

OPP.63:133; PP.63:115; Z.XXIII:234



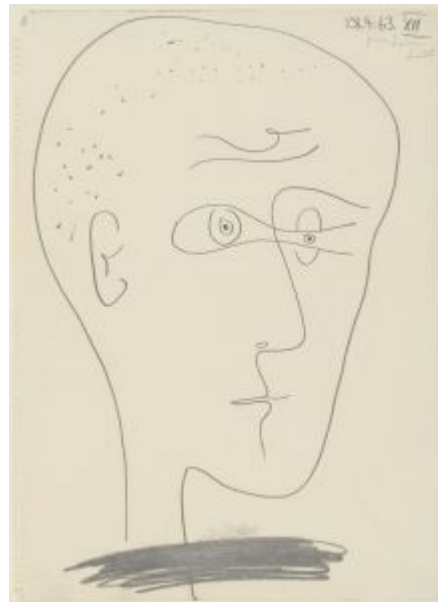


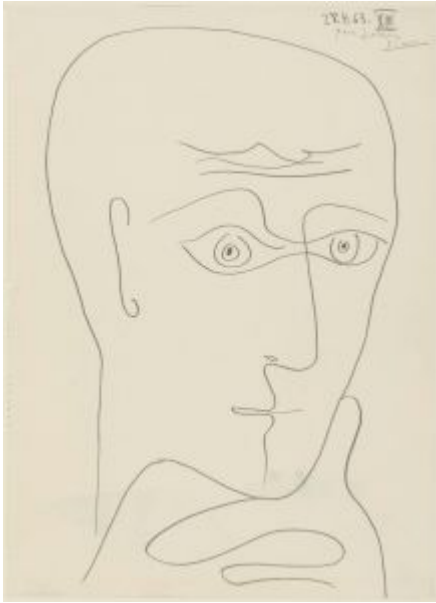
Portrait de Michel Leiris XI. Mougins. 28-April/1963. Color pencil & pastel on papier vergé. [37,5] 37,2 x 27 cm. Musée National d'Art Moderne, Centre Georges Pompidou, Paris. (Inv AM.1996-371.7). Dation 1996.

OPP.63:134; PP.63:116; Z.XXIII:236; JR.21:873p; PE.17*:59p

Portrait de Michel Leiris XII. Mougins. 28-April/1963. Graphite pencil on papier vergé. [37,5] 37,2 x 27 cm. Musée National d'Art Moderne, Centre Georges Pompidou, Paris. (Inv AM.1996-371.8). Dation 1996.

OPP.63:135; PP.63:117; Z.XXIII:235





Portrait de Michel Leiris XIII. Mougins. 28-April/1963.
[Graphite pencil] crayon on papier vergé. [37,5] 37,2 x 27 cm.
Musée National d'Art Moderne, Centre Georges Pompidou, Paris.
(Inv AM.1996-371.9). Dation 1996.

OPP.63:136; PP.63:118; Z.XXIII:237

Portrait de Michel Leiris XIV. Mougins. 28-April/1963.
Crayon & pencil on papier vergé. [37,5] 37,2 x 27 cm.
Musée National d'Art Moderne, Centre Georges Pompidou,
Paris. (Inv AM.1996-371.10). Dation 1996.

OPP.63:137; PP.63:119; Z.XXIII:238





Le peintre et son modèle. Mougins. 28-April/1963. Oil on canvas. 89 x 116 cm. Private collection.

OPP.63:345; PP.63:104; Z.XXIII:222;
GL.64*:50; HP.65:67p

Le peintre I. Mougins. 28-April/1963. Color crayons [Oic]. 37 x 27 cm. Private collection.

OPP.63:454; PP.63:105; Z.XXIII:224





Tête d'homme V. Mougins. 28-April/1963. Graphite on paper. 37 x 27 cm. Private collection.

OPP.63:458; PP.63:109; Z.XXIII:228

Tête d'homme. Mougins. 28-April~2-May/1963. Color crayons & graphite [OIC]. 37 x 27 cm. Private collection.

OPP.63:457; PP.63:108; Z.XXIII:227





Le peintre et son modèle dans un paysage II. Mougins. 28-April~4-May/1963. Oil on canvas. [89 x 130] 88,9 x 130,1 cm. Helly Nahmad Collection, Monaco/London. Formerly Christie's. #54, 9770, 11/06/01; Holger Graffmann Collection, Castellón.

OPP.63:036; PP.63:131; Z.XXIII:223;
BA.65*:n/a; GL.64*:51; HN.13*:265p;
HP.65:69p; JL.71:192p; KG.71:275; KG.85:275;
RP.81:26.6; WW.91:599p

Tête d'homme III. Mougins. 28-April/1963~3-May~20-August/1963. Color crayons & graphite [Oic]. 37 x 27 cm. Private collection.

OPP.63:456; PP.63:107; Z.XXIII:226





Maternité. Mougins. 29-April/1963. Colored pencil on paper. 86 x 62 cm. Private collection.

OPP.63:311

Le peintre et son modèle dans un paysage I.
Mougins. 1-May/1963. Oil on canvas. 81 x 65 cm. Le
Gallerie d'Italia, Minano. Collezione di Intesa
Sanpaolo.

OPP.63:275; PP.63:120; Z.XXIII:250; GL.64*:52;
HP.65:71p; ON.66:44p; PH.96:62





Brin de muguet (Baisses de neige) (Pour Dorothy). Mougins. 1-May/1963. Pencil & pastel on card. 26,3 x 19,9 cm. Bonhams. #36, 18861, 06/21/11. Formerly Bonhams. #72, 16218, 06/18/08.

OPP.63:297

Le peintre et son modèle dans un paysage II. Mougins. 1-May/1963. Oil on canvas [OiC]. 81 x 65 cm. Private collection.

OPP.63:466; PP.63:121; Z.XXIII:251





Le peintre et son modèle III. Mougins. 1~5, 11-May/1963. Oil on canvas. [81] 81,1 x 65 cm. Christie's. #31, 1505, 02/04/14. Formerly Christie's. #98, 5535, 12/02/08.

OPP.63:247; PP.63:133; Z.XXIII:252; GL.64*:53; HP.65:73p

Picasso 204 Assiettes Récentes. Vallauris. Pre-May/1963. Lithograph poster. S/U. Private collection.

OPP.63:389





Nu assis. Mougins. 2-May/1963. Color crayons & graphite [OIC].
37 x 27 cm. Private collection.

OPP.63:459; PP.63:122; Z.XXIII:239



Nu assis II. Mougins. 2-May/1963. Color crayons [OIC].
37 x 27 cm. Private collection.

OPP.63:460; PP.63:123; Z.XXIII:240



Nu assis VIII. Mougins. 2-May~15~16-September/1963. Pastel, colored pencils & pencil on paper. [37 x 27] 37,2 x 27 cm. Christie's. #311, 21888, 06/30/23. Formerly Christie's. #668, 20989, 11/19/22.

OPP.63:464; PP.63:216; Z.XXIII:247; LO.82a*:n/a

Bethsabée (d'après Rembrandt). Mougins. 2-May~16, 17, 19, 21, 22-September/1963. Colored crayon, pastel & pencil on paper. 37,1 x 26,9 cm. Sotheby's. #194, N09498, 05/10/16.

OPP.63:392





Nu assis IV. Mougins. 2-May~22-September/1963. Color crayons & graphite [OiC]. 37 x 27 cm. Private collection.

OPP.63:461; PP.63:125; Z.XXIII:242

Nu assis V. Mougins. 2-May~22-September/1963. Color crayons & graphite [OiC]. 37 x 27 cm. Private collection.

OPP.63:462; PP.63:126; Z.XXIII:243





Nu assis VI. Mougins. 2-May~22-September/1963. Color crayons & graphite [OiC]. 37 x 27 cm. Private collection.

OPP.63:463; PP.63:127; Z.XXIII:244

Bethsabée et la lettre de David III.

Mougins. 3-May/1963. Colored wax crayon & pencil on paper. [26,4 by 37,1] 27 x 37,1 cm. Christie's. #486, 21959, 05/13/23. Sotheby's. #318, N09931, 11/13/18.

OPP.63:051





Nu assis VI. Mougins. 3-May/1963. Pencil on paper. 27 x 37,2 cm. Christie's. #405, 6884, 02/05/04.

OPP.63:077; PP.63:129; Z.XXIII:246

Nu assis V. Mougins. 3-May/1963. Lead pencil on paper. 27 x 31 cm. Private collection.

OPP.63:306; PP.63:128; Z.XXIII:245; BE.09*:59





Tête d'homme II. Mougins. 3-May/1963. Color crayons & graphite [Oic]. 37 x 27 cm. Private collection.

OPP.63:455; PP.63:106; Z.XXIII:225

Femme nue lisant la lettre (Bethsabée) IV. Mougins. 3-May~15~16-September/1963. Pencil & crayon on paper. 27 x 37 cm. Private collection.

OPP.63:301; PP.63:217; Z.XXIII:248; PJ.14*:194p; SP.96:25





Bethsabée (d'après Rembrandt) (II). Mougins. 3-May~20-September/1963. Graphite & color crayons on white wove paper. 26,9 x 37,3 cm. Claude Ruiz-Picasso Collection.

OPP.63:358; PP.63:215; Z.XXIII:249; GT.81*:97; IC.05:205p; JL.66*:195; JL.67b:98-99p; WS.93*:148

Le peintre et son modèle. Mougins. 4-May/1963. Oil on canvas. 65 x 100 cm. Sotheby's. 2022. Formerly Opera Gallery; Sotheby's. #23, L10006, 06/22/10.

OPP.63:266; PP.63:130; Z.XXIII:253





Le peintre et son modèle dans un paysage.

Mougins. 5-May/1963. Oil on canvas. 65 x 100 cm. Musée d'Art et d'Histoire, Ville de Genève. (Inv BA 2011-0007). Gift of the late Roger et Françoise Varenne. Formerly Galerie Daniel Varenne.

OPP.63:274; PP.63:132; Z.XXIII:254; CT.23*:41; GL.64*:54; HP.65:74p; PE.01a*:79; TO.99*:182

Le peintre et son modèle. Mougins. 9-May/1963. Oil on canvas [OiC]. 81 x 116 cm. Private collection.

OPP.63:467; PP.63:136; Z.XXIII:255





Le peintre et son modèle II. Mougins. 10-May/1963. Oil on canvas. 89 x 116 cm. Fundación Almine & Bernard Ruiz-Picasso para el Arte.

OPP.63:292; PP.63:138; Z.XXIII:257;
BS.23b*:n/a; GA.00*:93; MG.04c*:26

Le peintre et son modèle dans un paysage I. Mougins. 10-May/1963. Oil on canvas [OiC]. 89 x 116 cm. Private collection.

OPP.63:468; PP.63:137; Z.XXIII:256





Photographie de la coupe offerte par le Conseil mondial de la Paix pour le vainqueur de la course cycliste de la Paix et décorée d'un dessin de Picasso. Mougins. 10-May/1963.
Photograph. 28 x 27,2 cm. Musée Picasso, Paris. (Inv 515AP/G/9/1/1(2)).

OPP.63:573

Le peintre et son modèle dans un paysage III. Mougins. 10~11-May1963.
Oil on canvas. 89 x 115,5 [116] cm. Mary and George Bloch Collection, Hong-Kong. Perls Galleries, New York.

OPP.63:304; PP.63:140; Z.XXIII:259;
EG.66*:57p; GL.64*:55; HP.65:74p;
PE.01a*:80



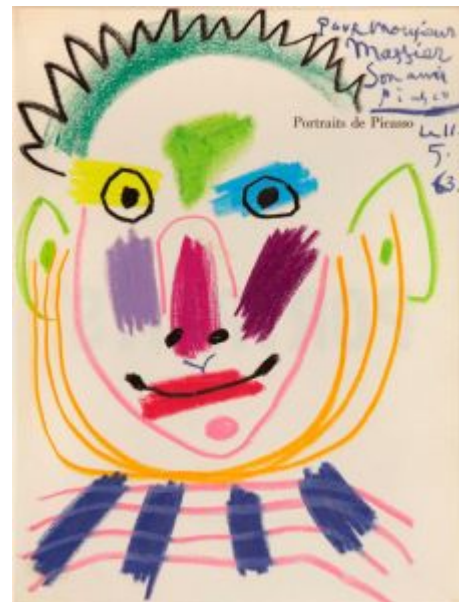


Le peintre et son modèle. Mougins. 11-May/1963. Oil on canvas. 65 x 100 cm. Sotheby's. #315, N09931, 11/13/18.

OPP.63:346; PP.63:139; Z.XXIII:258;
GL.64*:56; HP.65:75p

Tête (Pour Monsieur Massier). Mougins. 11-May/1963. Colored wax crayons on frontispiece of book Jacques Prévert, Portraits de Picasso. 31,1 x 23,6 cm. Galería Guillermo de Osma, Madrid.

OPP.63:420





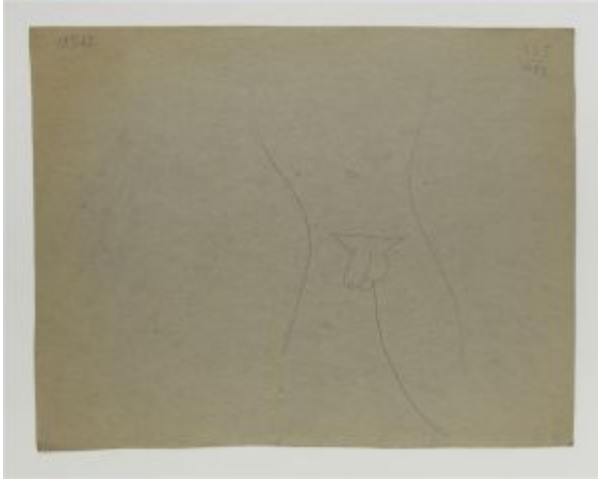
Le peintre et son modèle dans un paysage.
Mougins. 11-May~15-June~19-September/1963.
Oil on canvas. 130 x 194,8 [195] cm. Christie's.
#31, 2788, 11/05/13. Formerly Mr. and Mrs.
Samuel M. Kootz Collection, New York.

OPP.63:303; PP.63:141; Z.XXIII:260;
EG.66*:56p; NY.75b*:n/a; PJ.14*:193p

Femme dans un fauteuil, les bras croisés: buste (Jacqueline). Mougins. 12~13-May/1963. Oil on canvas. 130 x 89 cm. Christie's. #134, 7243, 06/20/06. Formerly Private collection. Courtesy Marta Cervera, Rojo y Negro, Madrid.

OPP.63:101; PP.63:142; Z.XXIII:273; MD.02*:339p;
NY.71b*:89





Homme nu. Mougins. 13-May/1963. Graphite pencil on paper. 24,5 x 31 cm. Musée Picasso, Paris. Dation 1979.

OPP.63:255; MPP:1852.v; PP.63:145;
CK.04*:116

Homme courant (Footballeur) (II).
Mougins. 13-May/1963. Graphite pencil on
cardboard. 24,5 x 31 cm. Musée Picasso,
Paris. Dation 1979.

OPP.63:256; MPP:1852.r; PP.63:144;
Z.XXIII:262; CK.04*:n/a



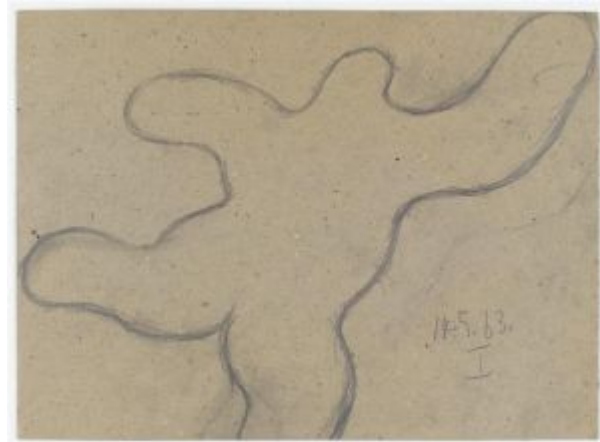


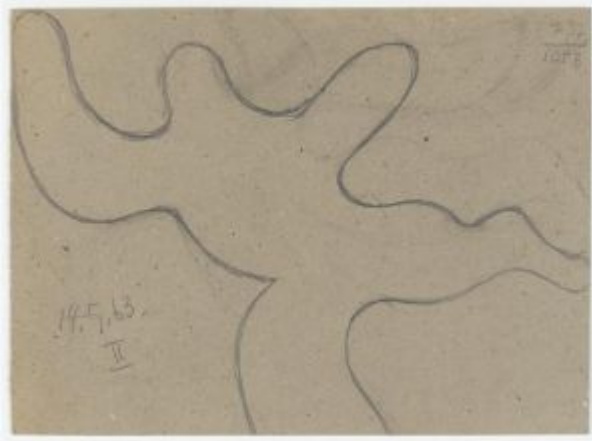
Personnage en mouvement I. Mougins. 13-May/1963. Graphite pencil on cardboard. [20 x 27] 19,8 x 26,6 cm. Musée Picasso, Paris. Dation 1979.

OPP.63:421; MPP:1851; PP.63:143; Z.XXIII:261

Personnage en mouvement I. Mougins. 14-May/1963. Graphite pencil on cardboard [Obverse of *Personnage en mouvement II*]. 19,8 x 27 cm. Musée Picasso, Paris. Dation 1979.

OPP.63:422; MPP:1853.r; PP.63:146; Z.XXIII:263





Personnage en mouvement II. Mougins. 14-May/1963. Graphite pencil on cardboard [Reverse of *Personnage en mouvement I*]. 19,8 x 27 cm. Musée Picasso, Paris. Dation 1979.

OPP.63:423; MPP:1853.v; PP.63:147; Z.XXIII:264

Buste de femme nue. Mougins. 15-May/1963. Oil on canvas. 92 x 60 cm. Private collection.

OPP.63:126; PP.63:148; Z.XXIII:274





Buste de femme nue II (Tête de profil). Mougins. 15-May/1963.
Oil on canvas. [92 x 60] 92,8 x 59,9 cm. Christie's. #15A, 15977,
11/11/18. Formerly Christie's. #543, 6146, 06/30/99.

OPP.63:295; PP.63:149; Z.XXIII:275; GL.64*:57; WA.15*:37p

Le peintre et son modèle. Mougins. 16-
May/1963. Oil on canvas. 73 x 116 cm.
Private collection.

OPP.63:347; PP.63:151; Z.XXIII:277;
GL.64*:58; HP.65:75p





Petit visage soleil. Vallauris. 16-May/1963. Painted & partially glazed ceramic round plate. 25,5 cm. Sotheby's. #209, L15007, 06/25/15.

OPP.63:365

Abstraction avec des ananas. Vallauris. 16-May/1963. Painted & partially glazed ceramic round plate. 25,5 cm. Sotheby's. #223, L15007, 06/25/15.

OPP.63:367





Visage (Œil). Vallauris. 16-May/1963. Painted & partially glazed ceramic round plate. 25,5 cm. Sotheby's. #530, L16005, 02/05/16.

OPP.63:379; BA.03a*:n/a; GE.04*:n/a; KU.99*:61; MF.10*:n/a; TF.00*:20; VC.98*:50

Assiette à décor informel. Vallauris. 16-May/1963. Painted & partially glazed ceramic round plate. 25,6 cm. Sotheby's. #532, L16005, 02/05/16.

OPP.63:380





Visage IV. Vallauris. 16-May/1963. Painted & partially glazed ceramic round plate. 25,5 cm. Sotheby's. #547, L16005, 02/05/16.

OPP.63:382

Chouette. Vallauris. 16-May/1963. Painted & partially glazed ceramic; round plate. 25 cm. Sotheby's. #9, N09727, 05/18/17. Formerly Marina Picasso Collection.

OPP.63:418; HB.85*:n/a





Décor informel III. Vallauris. 16-May/1963. Painted & partially glazed ceramic; round plate. 25,4 cm. Hélène Bailly Gallery. Formerly Sotheby's. #10, N10249, 11/26/19; Marina Picasso Collection.

OPP.63:554; GE.19*:n/a

Décor informel. Vallauris. 16-May/1963. Painted & partially glazed ceramic; round plate. 25,4 cm. Hélène Bailly Gallery. Formerly Sotheby's. #14, N10249, 11/26/19; Marina Picasso Collection.

OPP.63:556; GE.19*:n/a





Petit masque central. Vallauris. 16-May/1963. Painted & partially glazed ceramic; round plate. 25,4 cm. H el ene Bailly Gallery. Formerly Sotheby's. #24, N10249, 11/26/19; Marina Picasso Collection.

OPP.63:559; GE.19*:n/a

Plumage II. Vallauris. 16-May/1963. Painted & partially glazed ceramic; round plate. 25,4 cm. H el ene Bailly Gallery. Formerly Sotheby's. #26, N10249, 11/26/19; Marina Picasso Collection.

OPP.63:560; GE.19*:n/a





Décor informel. Vallauris. 16-May/1963. Painted & partially glazed ceramic; round plate. 25,5 cm. Sotheby's. #115, L20005, 02/19/20. Formerly Marina Picasso Collection.

OPP.63:564

Assiette ronde (Plumage). Vallauris. 16-May/1963. Painted & partially glazed ceramic; round plate. 25,4 cm. Sotheby's. #25, L20010, 06/18/20. Formerly Marina Picasso Collection.

OPP.63:568





Assiette décorée d'un petit visage. Vallauris.
16-May/1963. White earthenware, thrown, painted
with ceramic pastel & enamel, & glazed. 25,4 x 2,8
cm. Fundación Almine & Bernard Ruiz-Picasso para
el Arte.

OPP.63:607; MA.23a*:26

Assiette décorée d'un visage. Vallauris.
17-May/1963. White earthenware, thrown,
painted with slips & enamel, & glazed. 25,5
x 2,4 cm. Fundación Almine & Bernard
Ruiz-Picasso para el Arte.

OPP.63:606; MA.23a*:15





Le peintre V. Mougins. 18-May/1963. Graphite pencil. 23 x 11 cm. Private collection.

OPP.63:307; PP.63:156; Z.XXIII:269; TG.88:65

Pieds de peintre avec palette VIII. Mougins. 18-May/1963. Pencil. 22,2 x 10,9 cm. Marina Picasso Collection. (Inv 06220). Courtesy Galerie Jan Krugier, Geneva.

OPP.63:369; PP.63:159; Z.XXIII:272; JH.88*:6; MP.81*:270





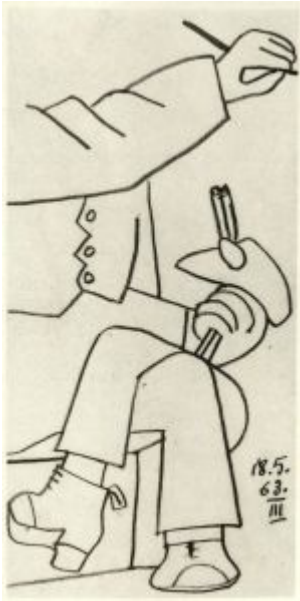
Le peintre I. Mougins. 18-May/1963. Graphite on paper. 15,5 x 10 cm. Private collection.

OPP.63:472; PP.63:152; Z.XXIII:265

Le peintre II. Mougins. 18-May/1963. Graphite on paper. 23 x 11 cm. Private collection.

OPP.63:473; PP.63:153; Z.XXIII:266





Le peintre III. Mougins. 18-May/1963. Graphite on paper. 23 x 11 cm.
Private collection.

OPP.63:474; PP.63:154; Z.XXIII:267

Le peintre IV. Mougins. 18-May/1963. Graphite on paper. 23 x 11 cm.
Private collection.

OPP.63:475; PP.63:155; Z.XXIII:268





Le peintre VI. Mougins. 18-May/1963. Graphite on paper. 23 x 11 cm. Private collection.

OPP.63:476; PP.63:157; Z.XXIII:270

Le peintre VII. Mougins. 18-May/1963. Graphite on paper. 23 x 11 cm. Private collection.

OPP.63:477; PP.63:158; Z.XXIII:271





Pieds d'homme chaussés. Mougins. 18~19-May/1963. Color pencil on canvas. 81 x 54 cm. Private collection.

OPP.63:356; PP.63:160; Z.XXIII:276; HP.66:79p

Nu couché. Mougins. 22-May/1963. Oil on canvas. 130 x 195 cm. Private collection.

OPP.63:229; PP.63:161; Z.XXIII:278;
BB.11*:2; BG.05*:34-35p; GL.64*:59;
MD.02*:345p; WS.07:231p





Buste de femme. Mougins. 23-May/1963. Oil on canvas. [92 x 73] 91,4 x 71,1 cm. Sotheby's. #16, HK0504, 01/06-16/14. Formerly Russeck Gallery, Palm Beach. 2006. Sotheby's. #64, 11/12/96.

OPP.63:099; PP.63:162; Z.XXIII:280; RP.81:27.8

Tête de femme (Jacqueline). Mougins. 24-May/1963. Oil on canvas. 90,2 x 58,4 cm. Laurence Graff Collection. Formerly Christie's. #29, 7831, 02/02/10.

OPP.63:259; PP.63:163; Z.XXIII:279; DL.67*:n/a; WA.67a*:42





Tête de femme II (Jacqueline). Mougins. 24-May/1963. Oil on canvas. 81 x 54 cm. Private collection.

OPP.63:314; PP.63:164; Z.XXIII:282; AH.13*:109; GL.64*:62; HP.65:76p

Femme assise dans un fauteuil, buste. Mougins. 25~28-May/1963. Oil on canvas. 116 x 73 cm. Sotheby's. #40, N09139, 05/07/14.

OPP.63:348; PP.63:166; Z.XXIII:281; GL.64*:63; HP.65:77p





Visage no 30. Vallauris. 26-May/1963. White earthenware plate, decoration in engobes & enamel under partial brushed glaze, edition 150. 25,3 cm. Christie's. #184, 9632, 04/25/01.

OPP.63:023; AR:464

Femme assise. Mougins. 26-May/1963. Oil on canvas. 195 x 130 cm. Musée Picasso, Paris. Dation 1979.

OPP.63:257; MPP:218; PP.63:165; MP.85:192; PA.79a*:366





Visage. Vallauris. 26-May/1963. Hand-painted & glazed ceramic. 25 cm. Sotheby's. #41, PF1316, 12/04/13.

OPP.63:324

Assiette ronde décorée d'une tête de faune. Vallauris. 26-May/1963. White earthenware plate, decoration in engobes & enamel under partial brushed glaze. 2 x 25 cm. Musée National de la Céramique, Sèvres. On loan from Musée Picasso, Paris. Jacqueline Roque Picasso Collection. Dation 1990.

OPP.63:590; MPP:1990.378; GR.90*:159; IC.03*:n/a; ND.01*:119; QU.04*:n/a





Visage no 46. Vallauris. 27-May/1963. Plate in painted ceramic, edition 150. 25,5 cm. Christie's. #80, 2391, 05/29/01.

OPP.63:028; AR:466

Assiette ronde décorée d'un visage.

Vallauris. 27-May/1963. White earthenware plate, decoration in engobes & enamel under partial brushed glaze. 2 x 25 cm. Musée National de la Céramique, Sèvres. On loan from Musée Picasso, Paris. Jacqueline Roque Picasso Collection. Dation 1990.

OPP.63:591; MPP:1990.379; GR.90*:160; IC.03*:n/a; QU.04*:n/a





Toreador (Pour Anne Leymarie). Mougins. 28-May/1963. Oil on paper. 24,4 x 62,5 cm. Sotheby's. #145, L07009, 06/20/07.

OPP.63:216

Portrait de Pepe Illo. Mougins. 28-May/1963. Drypoint. 19,5 x 16,5 cm. Musée Picasso, Paris. Jacqueline Roque Picasso Collection. Dation 1990.

OPP.63:427; B.I:1109; Ba:1102; MPP:1990.132





Visage. Vallauris. 30-May/1963. Fully glazed ceramic plate. 25,2 cm. Christie's. #312, 7976, 06/22/11.

OPP.63:283; BS.08b*:25

Poisson. Vallauris. 30-May/1963. Painted & glazed ceramic; round plate. 25,1 cm. Sotheby's. #302, N10148, 11/13/19. Formerly Marina Picasso Collection.

OPP.63:553





Décor informel. Vallauris. 30-May/1963. Painted & partially glazed ceramic. 25,4 cm. Hélène Bailly Gallery. Formerly Sotheby's. #20, N10249, 11/26/19; Marina Picasso Collection.

OPP.63:558; GE.19*:n/a

Décor informel. Vallauris. 30-May/1963. Painted & partially glazed ceramic; round plate. 25,5 cm. Sotheby's. #14, L21005, 04/14/21. Formerly Marina Picasso Collection.

OPP.63:580





Oiseau. Vallauris. 1-June/1963. Partially glazed ceramic plate. 25,1 cm. Christie's. #303, 7976, 06/22/11.

OPP.63:280; BS.08b*:26

Oiseau. Vallauris. 1-June/1963. Partially glazed ceramic plate. 25,4 cm. Christie's. #304, 7976, 06/22/11.

OPP.63:281; BS.08b*:27





Oiseau. Vallauris. 1-June/1963. Partially glazed ceramic plate. 25,1 cm. Christie's. #306, 7976, 06/22/11.

OPP.63:282; BS.08b*:28

Oiseau. Vallauris. 1-June/1963. Painted & partially glazed ceramic round plate. 25,4 cm. Sotheby's. #501, L16005, 02/05/16.

OPP.63:377





Oiseau. Vallauris. 1-June/1963. Painted & partially glazed ceramic round plate. 25,8 cm. Sotheby's. #502, L16005, 02/05/16.

OPP.63:378; HB.85*:n/a

Assiette décorée d'un oiseau. Vallauris. 1-June/1963. White earthenware, thrown, painted with slips, enamel & oxides. 25,2 x 25,5 x 2,2 cm. Fundación Almine & Bernard Ruiz-Picasso para el Arte.

OPP.63:603; MA.23a*:11





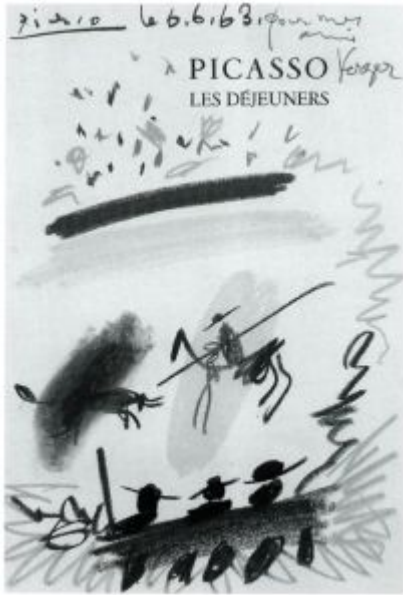
Le peintre et son modèle dans un paysage.
Mougins. [June]/1963. Oil on canvas. 74 x 92 cm.
Catherine Hutin-Blay Collection, Paris. Formerly
Jacqueline Roque Picasso Collection.

OPP.63:354; PD.19*:89; TO.14*:117

Visage (Fleur). Vallauris. 2-June/1963.
Painted & partially glazed ceramic round
plate. 25,6 cm. Sotheby's. #533, L16005,
02/05/16.

OPP.63:381





La corrida (Pour mes amis Verger). Mougins. 6-June/1963. Wax crayons [OIC]. 36,7 x 25,5 cm. Private collection. Formerly Christie's. #178, 06/26/90; Christie's. #427A, 04/04/89.

OPP.63:599; PP.63:170

Le peintre III. Mougins. 8-June/1963. Oil on canvas. [92 x 66] [92 x 87,5] 92 x 60 cm. Sotheby's. #1532, HK1518, 04/05/24. Formerly Museum Boijmans van Beuningen, Rotterdam. (Inv BRL 83-01.MK); Bruikleen Collection. Acquired 2011.

OPP.63:288; PP.63:172; Z.XXIII:285; BS.23b*:n/a; GL.64*:65; HP.65:79p; LO.98b*:n/a; RT.99*:1; TH.07b*:n/a





Femme dans un fauteuil I. Mougins. 8-June/1963. Oil on canvas. 100 x 65 cm. Private collection.

OPP.63:309; PP.63:171; Z.XXIII:283; GA.00*:94; MG.04b*:121

Le peintre et son modèle II. Mougins. 8, 10~June/1963. Oil on canvas. 92 x 60 cm. Private collection.

OPP.63:349; PP.63:173; Z.XXIII:284; GL.64*:64; HP.65:80p





Le peintre et son modèle. Mougins. 10~12-June/1963. Oil on canvas. 195 x 130,3 cm. Neue Pinakothek, München. (Inv BGM.1).

OPP.63:004; PP.63:174; Z.XXIII:286; CB.11:192p; DQ.74:40p; HD.04:59p; HP.65:81p; JF.96:181p; KG.71:278; KG.85:278; MM.00:89p; RP.81:27.5; TI.71:117p; TO.14:97p; UP.00:1075; WS.11:279p; WS.93*:147; WW.91:588p

Visage no 125. Vallauris. 13-June/1963. Ceramic plate painted & partially glazed, edition 150. 26 x 26 cm. Christie's. #161, 2382, 11/28/00.

OPP.63:015; AR:477





Assiette ronde décorée d'une tête de faune. Vallauris. 13-June/1963. Ceramic plate painted & partially glazed. 2 x 25 cm. Musée National de la Céramique, Sèvres. On loan from Musée Picasso, Paris. Jacqueline Roque Picasso Collection.

OPP.63:592; MPP:1990.380; GR.90*:161;
IC.03*:n/a; ND.01*:120

Assiette avec oiseau. Vallauris. 14-June/1963. Faïence, engobe painting partly beneath glaze. 25 cm. Museum Ludwig, Köln. (Inv ML 01594). Schenkung 2001.

OPP.63:220; WO.92*:155





Visage. Vallauris. 14-June/1963. Painted & partially glazed ceramic round plate. 25,4 cm. Sotheby's. #671, L16005, 02/05/16. Formerly Marina Picasso Collection.

OPP.63:388

Homme et femme. Vallauris. 15-June/1963. Glazed tiles in rusty red, greenish yellow, ultramarine, black & white. 100 x 75 cm. Marina Picasso Collection. (Inv 59260). Courtesy Galerie Jan Krugier, Geneva.

OPP.63:278; GS.85*:141; PD.02*:105





Tête d'homme au nez bleu. Vallauris. 15-June/1963. Painted & glazed ceramic; square tile. 25,7 x 25,7 x 2,3 cm. Sotheby's. #31, PF0016, 10/21/20.

OPP.63:572

Carreau décoré d'un visage. Vallauris. 15-June/1963. White earthenware, moulded & painted with slips & enamel. 25,5 x 25,5 x 2,7 cm. Fundación Almine & Bernard Ruiz-Picasso para el Arte.

OPP.63:604; MA.23a*:12





Visage de face. Vallauris. 16-June/1963.
Terracotta plate, edition 100. 26 cm. Sotheby's.
#108, W04704, 03/24/04.

OPP.63:081; AR:508

Le peintre et son modèle dans un paysage II. Mougins. 16-June/1963. Oil on canvas. 54 x 81 cm. Private collection.

OPP.63:124; PP.63:176; Z.XXIII:288;
GP.96:349p; HP.65:82p; PE.01a*:81;
WW.91:599p





Le peintre et son modèle dans un paysage I.
Mougins. 16-June/1963. Oil on canvas [OïC]. 54 x
81 cm. Private collection.

OPP.63:478; PP.63:175; Z.XXIII:287

Assiette ronde (Visage). Vallauris. 17-
June/1963. Painted & glazed ceramic. 25,3
cm. Sotheby's. #2, L20010, 06/18/20.
Formerly Marina Picasso Collection.

OPP.63:217





Le peintre et son modèle dans un paysage.

Mougins. 17-June/1963. Oil on canvas. 65 x 100 cm. Sotheby's. #30, N09710, 05/16/17. Formerly Sotheby's. #32, L11002, 02/08/11.

OPP.63:276; PP.63:179; Z.XXIII:291;
GL.64*:68; HP.65:83p

Visage. Vallauris. 17-June/1963. Painted & partially glazed ceramic round plate. 25,3 cm. Sotheby's. #548, L16005, 02/05/16.

OPP.63:383; BA.03a*:n/a





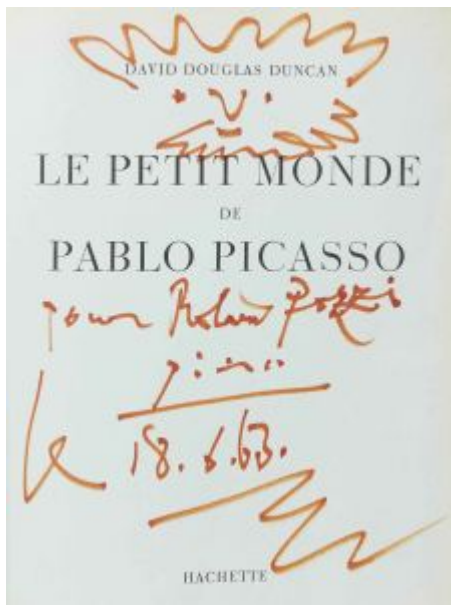
Visage. Vallauris. 17-June/1963. Painted & glazed ceramic. [25,5] 24,9 cm. Sotheby's. #101, L20005/ 02/19/20. Formerly Marina Picasso Collection. (Inv 59008).

OPP.63:562; BA.03a*:289

Visage. Vallauris. 18-June/1963. Painted & glazed white earthenware plate. 25 cm. Sotheby's. #415, L08008, 06/26/08. Formerly Sotheby's. #72, PF7029, 13/12/07.

OPP.63:226





Tête d'homme (Pour Roland Pozzi). Vallauris. 18-June/1963. Felt-tip pen on title page of the book David Douglas Duncan, Le Petir Monde de Pablo Picasso. 27,8 x 21,2 cm. Christie's. #1, 10393, 02/06/15.

OPP.63:359

Assiette décorée d'un visage. Vallauris. 18-June/1963. White earthenware, thrown, painted with slips, enamel & glazed. 25,4 x 2,5 cm. Fundación Almine & Bernard Ruiz-Picasso para el Arte.

OPP.63:609; MA.23a*:31





Visage. Vallauris. 20-June/1963. White clay plate, decoration with engobe, partially enamelled. 25 [25,5] cm. Christie's. #311, 7976, 06/22/11. Formerly Fondation Beyeler, Riehen/Basel.

OPP.63:142; BS.08b*:30; WW.91:601p

Visage. Vallauris. 20-June/1963. White clay plate, decoration with engobe, enamelled. 25 cm. Galerie Beyeler, Basel.

OPP.63:143; WW.91:601p



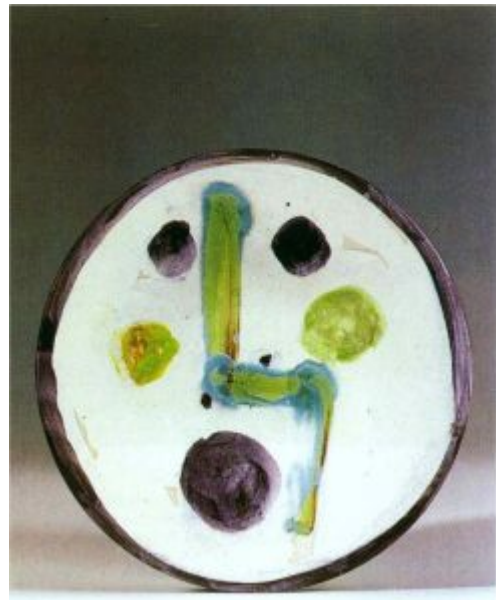


Visage. Vallauris. 20-June/1963. White clay plate, decoration with engobe, enamelled. 25 [25,1] cm. Christie's. #328, 7976, 06/22/11. Formerly Fondation Beyeler, Riehen/Basel.

OPP.63:144; BS.08b*:29; WW.91:601p

Visage. Vallauris. 20-June/1963. White clay plate, decoration with engobe, partially enamelled. 25 cm. Private collection.

OPP.63:145; WW.91:600p



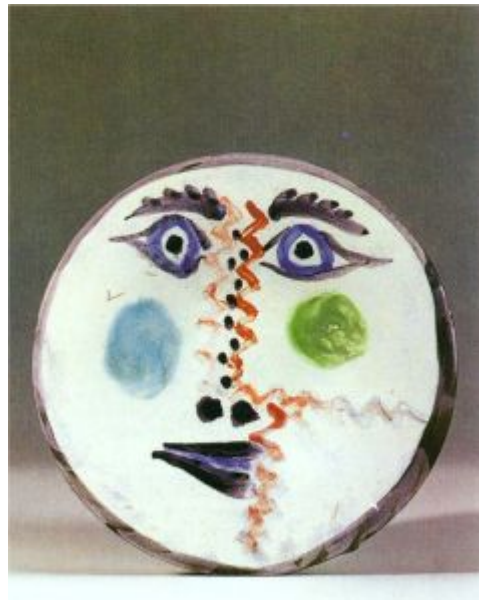


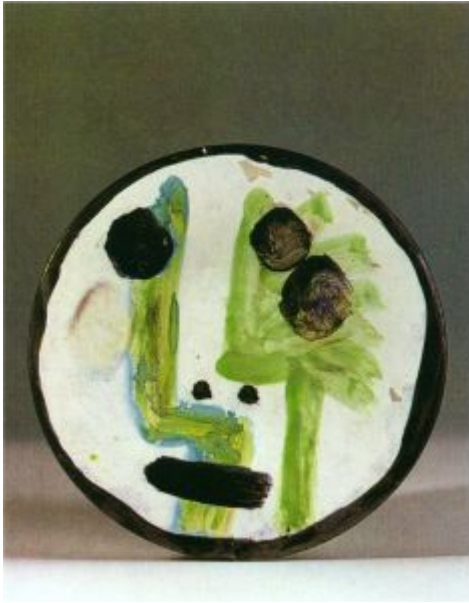
Visage. Vallauris. 20-June/1963. White clay plate, decoration with engobe, enamelled. 25 cm. Galerie Beyeler, Basel.

OPP.63:146; WW.91:600p

Visage. Vallauris. 20-June/1963. White clay plate, decoration with engobe, enamelled. 25 cm. Private collection.

OPP.63:147; WW.91:600p





Visage. Vallauris. 20-June/1963. White clay plate, decoration with engobe, partially enamelled. 25 cm. Galerie Beyeler, Basel.

OPP.63:148; WW.91:600p

Visage. Vallauris. 20-June/1963. Fully glazed ceramic plate. 25,2 cm. Christie's. #327, 7976, 06/22/11.

OPP.63:279; BS.08b*:31





Assiette décorée d'un visage. Vallauris. 20-June/1963. White earthenware, thrown, painted with slips & enamel, & glazed. 25,3 x 2,7 cm. Fundación Almine & Bernard Ruiz-Picasso para el Arte.

OPP.63:605; MA.23a*:14

Visage. Vallauris. 21-June/1963. Painted & partially glazed ceramic; round plate. 25,1 cm. Hélène Bailly Gallery. Formerly Sotheby's. #303, L20004, 02/05/20; Marina Picasso Collection.

OPP.63:271; KU.99*:63





Visage (nez à angle droit). Vallauris. 21-June/1963. Painted & partially glazed ceramic; round plate. 25,4 cm. Sotheby's. #84, N09727, 05/18/17. Formerly Marina Picasso Collection.

OPP.63:416; HB.85*:n.a

Visage, nez à angle droit. Vallauris. 21-June/1963. Painted ceramic; round plate. 25,5 cm. Sotheby's. #83, N09727, 05/18/17. Formerly Marina Picasso Collection.

OPP.63:417; FB.13*:n/a; HB.85*:n/a





Homme à la moustache. Vallauris. 21-June/1963. Painted & glazed ceramic; round plate. 25,4 cm. Sotheby's. #85, N09727, 05/18/17. Formerly Marina Picasso Collection.

OPP.63:419

Visage à nez droit. Vallauris. 21-June/1963. Painted & partially glazed ceramic; round plate. 25,7 cm. Sotheby's. #132, L20005, 02/19/20. Formerly Marina Picasso Collection.

OPP.63:566; HB.85*:n/a; KU.99*:65





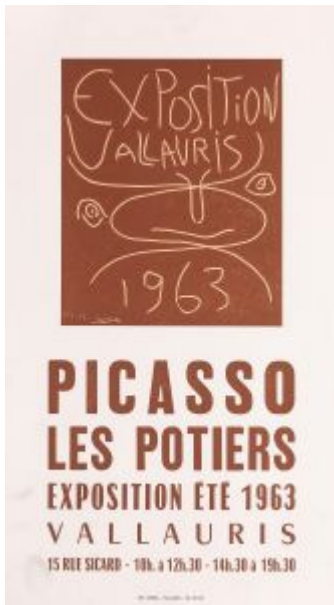
Tête (Pour Pozzi). Mougins. 21-June/1963. Felt-tip pen [Oic]. 20,8 x 14,7 cm. Private collection. Formerly Sotheby's. #77, 05/24/89.

OPP.63:600; PP.63:180

Tête de femme: profil. Mougins. [Summer]/1963. Wash. 74 x 60 cm. Private collection.

OPP.63:551; PP.63:177; Z.XXIII:289; BS.67a*:49



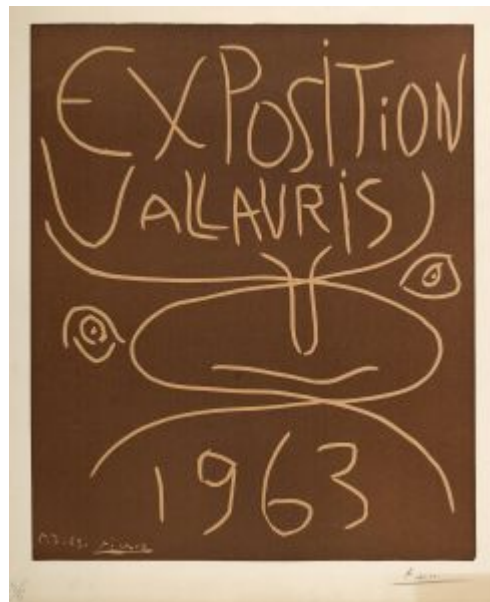


Picasso Les Potiers. Vallauris. Summer/1963. Offset lithographs in colors, on thin wove paper [After *Exposition Vallauris 1963*]. 90,2 x 58,1 cm. Bonhams. #88AR, 26710, 03/23/21.

OPP.63:577

Exposition Vallauris 1963. Vallauris. 5-July/1963. Linoleum cur in beige & brown on wove. 63,5 x 53 cm. Sotheby's. #239, L14162, 05/07/14.

OPP.63:312; B.I:1300; Ba:1341.A; CC:50; MG.00:20; MM.11b*:98





Visage de face. Vallauris. 8-July/1963. Terracotta plate, edition 100. 26 cm. Sotheby's. #717, W01402, 10/24/01.

OPP.63:042; AR:498

Visage de face. Vallauris. 8-July/1963. Unglazed white earthenware plate. 26,2 cm. Christie's. #454, 4232, 06/25-26/12.

OPP.63:172; AR:497; B.III:155





Visage au masque de chevrons. Mougins. 12-July/1963. Ceramic plate, edition 100. 26,6 cm. Christie's. #168, 9201, 09/28/01.

OPP.63:035; AR:501; B.III:157

Visage. Vallauris. 12-July/1963. Terracotta plate, edition 100. 26 cm. Sotheby's. #716, W01402, 10/24/01.

OPP.63:040; AR:500





Visage lunaire. Vallauris. 12-July/1963. Ceramic with modelled elements in relief; round plate. 26,3 cm. Sotheby's. #55, L20010, 06/08/20. Formerly Marina Picasso Collection.

OPP.63:104; AR:502

Visage au gros nez. Vallauris. 12-July/1963. White ceramic plate, edition 100 [After *Visage*]. 26,6 cm. Christie's. #0018, 5300, 10/25/07.

OPP.63:222; AR:503; B.III:158





Visage au gros nez. Mougins. 12-July/1963.
Terracotta plate, edition 100. 26 cm. Fundación
Almine & Bernard Ruiz-Picasso para el Arte. Also
Christie's. #55, 5846, 04/29/09.

OPP.63:250; AR:504; MA.23a*:5

Visage. Vallauris. 12-July/1963. Unglazed
white earthenware plate. 26,2 cm.
Christie's. #455, 4232, 06/25-26/12.

OPP.63:294; AR:499; B.III:156





Assiette décorée d'un visage. Vallauris. 12-July/1963. White earthenware, thrown, press-moulded, painted with slips, enamel, & glazed. 26,6 x 3,5 cm. Fundación Almine & Bernard Ruiz-Picasso para el Arte.

OPP.63:608; MA.23a*:27

Visage en relief épais. Vallauris. 15-July/1963. Terracotta plate, edition 100. 26 cm. Sotheby's. #115, W03703, 03/20/03.

OPP.63:058; AR:506; MA.23a*:41





Visage en gros relief. Mougins. 15-July/1963.
White earthenware plate, edition 100. 26 cm.
Artcurial. #410, 1331, 10/22/07.

OPP.63:238; AR:505; B.III:159

Visage. Vallauris. 15-July/1963. Painted,
modeled & glazed ceramic; round plate.
27,3 cm. H el ene Bailly Gallery. Formerly
Sotheby's. #11, N10249, 11/26/19; Marina
Picasso Collection.

OPP.63:555





Visage. Vallauris. 15-July/1963. Painted & partially glazed ceramic; round plate. 26,2 cm. H el ene Bailly Gallery. Formerly Sotheby's. #283, L21004, 03/19-26/21; Marina Picasso Collection.

OPP.63:579

Visage de face. Vallauris. 16-July/1963. White earthenware plate, edition 100. 26 cm. Sotheby's. #178, W04714, 10/20/04.

OPP.63:091; AR:507; B.III:162





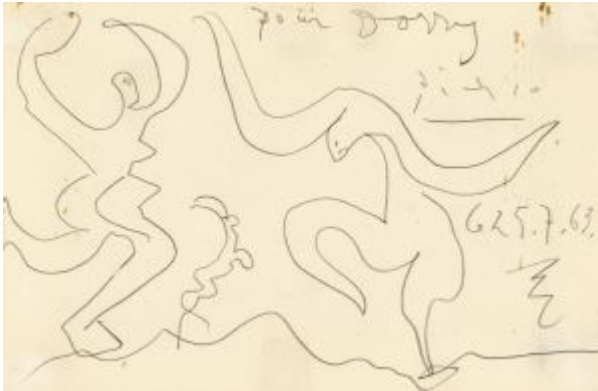
Visage. Vallauris. 23-July/1963. Painted & partially glazed ceramic; round plate. 26,5 cm. Sotheby's. #143, L20005, 02/19/20. Formerly Marina Picasso Collection.

OPP.63:563; GE.98a*:59; KU.99*:67

Visage. Vallauris. 24-July/1963. Painted & partially glazed ceramic round plate. 27 cm. Sotheby's. #682, L16005, 02/05/16. Formerly Marina Picasso Collection.

OPP.63:390; GE.04*:n/a; KU.99*:69; VC.98*:57





Deux danseurs. Mougins. 25-July/1963. Pencil on paper. 13,4 x 20,5 cm. Sotheby's. #304, L18004, 03/01/18.

OPP.63:435

Visage. Vallauris. 5-August/1963. Painted & glazed ceramic; round plate. 26,7 cm. Sotheby's. #304, L20004, 02/05/20. Formerly Marina Picasso Collection.

OPP.63:561; GE.98a*:55; KU.99*:70





Visage. Vallauris. 5-August/1963. Painted & glazed ceramic. 26,7 cm. Sotheby's. #49, L20010, 06/18/20. Formerly Marina Picasso Collection.

OPP.63:567

Visages (Pour Richard). Vallauris. 5-August/1963. Colored pastel on paper. 60 x 43,5 cm. H el ene Bailly Gallery.

OPP.63:582





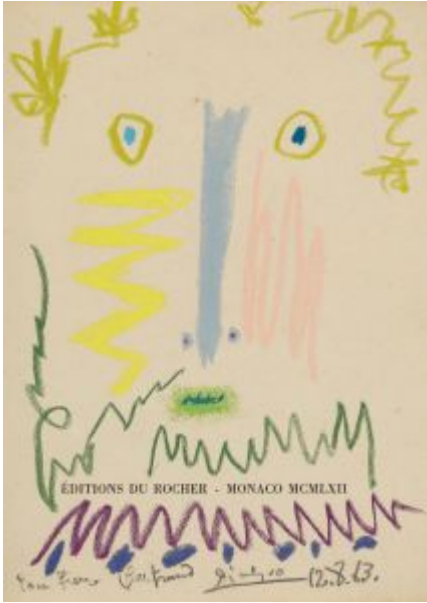
Tête de faune (Carnet Catalan). Mougins. 8-
August/1963. [Ink on paper]. S/U. Conzen, Beck
and Eggeling. 2009.

OPP.63:251

Tête d'homme (Pour Gabriel Cabrol). Mougins. 12-
August/1963. Wax crayon on paper. 37,2 x 27,3 cm.
Sotheby's. #38, PF1216, 12/05/12. Formerly Christie's.
#491, 7060, 06/23/05; Christie's. #415, 06/27/02.

OPP.63:269; AM.65a*:n/a





Homme (Pour Pierre Bertrand). Mougins. 12-August/1963.
Pastel on paper. [35,5 x 25,4] 36,8 x 27,3 cm. Sotheby's. #412,
N10148, 11/13/19. Formerly Miriam Teicher Collection.

OPP.63:313; CC.01*:45p

Femme débraillée. Vallauris. 20-
August/1963. White ceramic plate. 26,7
cm. Christie's. #187, 9632, 04/25/01.

OPP.63:025; AR:510; B.III:160





Femme échevelée. Vallauris. 20-August/1963. Terracotta plate, edition 100. 26 cm. Sotheby's. #700, W01402, 10/24/01.

OPP.63:038; AR:511

Femme échevelée. Vallauris. 20-August/1963. Painted & glazed white earthenware plate, edition 100. 26,8 cm. Fogg Art Museum, Harvard University, Cambridge, MA. (Inv 1998.15.4). Bequest of William A. Koshland. Also Christie's. #94, 5008, 04/05/06.

OPP.63:171; AR:509; B.III:161



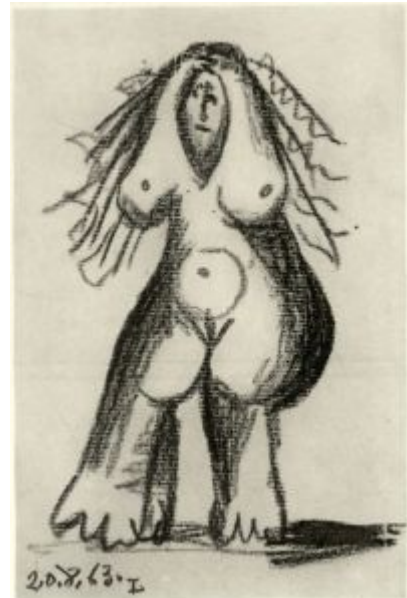


Femme nue assise II. Mougins. 20-August/1963. Crayon on paper.
28,5 x 14,5 cm. Musée Picasso, Paris.

OPP.63:249; PP.63:183; Z.XXIII:293; AM.08:330p; GG.86*:169

Nu debout I. Mougins. 20-August/1963. Green crayon [Oic].
[28,5 x 14,5] 24 x 15,5 cm. Private collection.

OPP.63:480; PP.63:182; Z.XXIII:292





Femme nue assise III. Mougins. 20-August/1963. Color crayons & graphite [OIC]. [28,5 x 14,5] 24 x 15,5 cm. Private collection.

OPP.63:481; PP.63:184; Z.XXIII:294

Tête de profil VI. Mougins. 20-August/1963. Graphite on paper. [28,5 x 14,5] 24 x 15,5 cm. Private collection.

OPP.63:482; PP.63:185; Z.XXIII:297



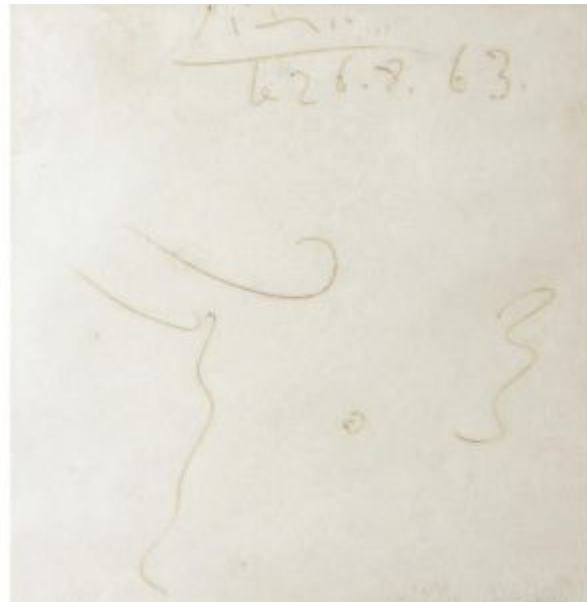


Femme assise, les bras levés IV. Mougins. 20, 27-August/1963. Graphite on paper. 14,5 x 28,5 cm. Private collection.

OPP.63:397; PP.63:188; Z.XXIII:295; BA.90a*:69; GG.86*:169; MA.91a*:81

Tête de taureau. Mougins. 26-August/1963. Pen & ink on paper. 21,2 x 21,5 cm. Sotheby's. #317, W07715, 03/15/07.

OPP.63:211





Femme nue assise V. Mougins. 20~27-August/1963. Graphite & color pencil. 28,5 x 14,5 cm. Musée Picasso, Paris.

OPP.63:248; PP.63:189; Z.XXIII:296; AM.08:329p; GG.86*:169

Femme nue debout. Mougins. 27-August/1963. Color crayons & graphite [Oic]. [28,5 x 14,5] 24 x 15,5 cm. Private collection.

OPP.63:483; PP.63:187; Z.XXIII:298





Femme nue assise. Mougins. 28-August/1963. Color pencil on paper. 14,5 x 28,5 cm. Private collection.

OPP.63:398; PP.63:190; Z.XXIII:299; BA.90a*:69; GG.86*:169; MA.91a*:81

Visage de faune. Vallauris. 29-August/1963. White clay decorated with engobe & partially glazed. 42,9 x 42,9 x 15 cm. Museu Picasso, Barcelona. Donation Jacqueline Roque Picasso, 1982.

OPP.63:285; MPB:112.429; TO.04*:210





Yan bandeau noir. Vallauris. 30-August/1963. Painted terracotta, edition 300. 27,5 cm. Christie's. #172, 2415, 12/18/02.

OPP.63:056; AR:514

Yan visage. Vallauris. 30-August/1963. Earthenware pitcher, unglazed, painted in black, edition 300. 26 cm. Sotheby's. #441, N07931, 10/31/03.

OPP.63:075; AR:512



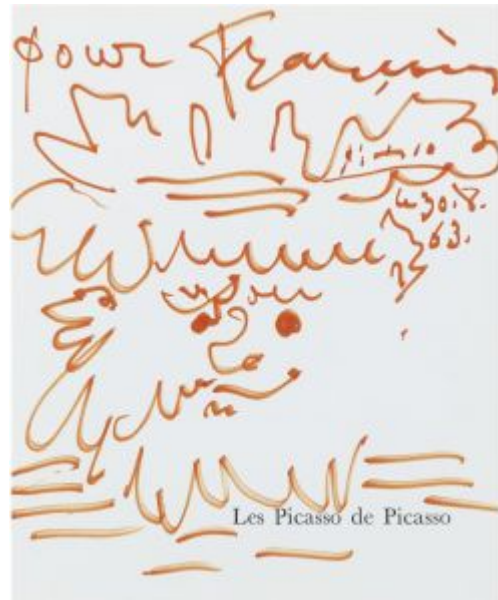


Yan bandeau noir. Vallauris. 30-August/1963. Red ceramic pitcher painted in black, edition 300. 25,4 x 17,8 cm. Christie's. #392, 1344, 02/12/04.

OPP.63:080; AR:515

Tête d'homme barbu (Pour François). Vallauris. 30-August/1963. Orange crayon. [30 x 25,5] 30,6 x 26,2 cm. Sotheby's. #108, N08473, 10/07/08. Formerly Sotheby's. #313, W07716, 07/12/07.

OPP.63:127





Yan soleil. Cannes. 30-August/1963. Red ceramic pitcher painted in black, edition 300. 28 x 13 cm. Artcurial. #414, 1331, 10/22/07.

OPP.63:239; AR:516

Tete de faune. Mougins. 30-August/1963. Pencil on paper. 42 x 27 cm. Hélène Bailly Gallery.

OPP.63:574





Yan barbu. Vallauris. 30-August/1963. Red ceramic pitcher painted in black, edition 300. 26,6 cm. Christie's. #223, 1368, 04/28/04.

OPP.63:083; AR:513; GE.19*:n/a

Poisson bleu. Vallauris. 31-August/1963. Painted & partially glazed ceramic deep bowl. 41 cm. Sotheby's. #185, L15007, 06/25/15.

OPP.63:364





Visage. Vallauris. 31-August/1963. Painted, incised & partially glazed ceramic deep bowl. 26 cm. Sotheby's. #222, L15007, 06/25/15.

OPP.63:366

Poissons et crustacés. Vallauris. 1-September/1963. Painted, partially glazed & incised ceramic deep bowl. 41,8 cm. Sotheby's. #184, L15007, 06/25/15.

OPP.63:363





Femme nue assise I. Mougins. 1-September/1963. Color crayons [OïC]. [28,5 x 14,5] 24 x 15,5 cm. Private collection.

OPP.63:484; PP.63:191; Z.XXIII:300



Femme nue allongée II. Mougins. 1-September/1963. Color crayons [OïC]. [14,5 x 28,2] 15,5 x 24 cm. Private collection.

OPP.63:485; PP.63:192; Z.XXIII:304



Femme nue allongée III. Mougins. 1-September/1963. Color crayons [Oic]. [14,5 x 28,2] 15,5 x 24 cm. Private collection.

OPP.63:486; PP.63:193; Z.XXIII:305

Femme nue assise, les bras levés II. Mougins. 2-September/1963. Graphite on paper. 14,5 x 28,5 cm. Private collection.

OPP.63:400; PP.63:194; Z.XXIII:302; BA.90a*:69; GG.86*:169; MA.91a*:81





Femme nue assise, les bras levés III. Mougins. 2-September/1963. Graphite on paper. 14,5 x 28,5 cm. Private collection.

OPP.63:401; PP.63:195; Z.XXIII:303; BA.90a*:69; GG.86*:169; MA.91a*:81

Femme nue assise, les bras levés IV. Mougins. 2-September/1963. Graphite on paper. 14,5 x 28,5 cm. Private collection.

OPP.63:402; PP.63:196; Z.XXIII:306; BA.90a*:69; GG.86*:169; MA.91a*:81





Femme nue assise, les bras levés I. Mougins. 2, 4, 5, 8-September/1963. Graphite & color pencil on paper. 14,5 x 28,5 cm. Private collection.

OPP.63:399; PP.63:201; Z.XXIII:301; BA.90a*:69; GG.86*:169; MA.91a*:81

Visage. Vallauris. 3-September/1963. Painted & incised ceramic bowl. 17 cm. Sotheby's. #630, L16005, 02/05/16. Formerly Marina Picasso Collection.

OPP.63:387





Deux hommes nus debout I. Mougins. 5-September/1963. Color crayons [OïC]. [28,5 x 14,5] 24 x 15,5 cm. Private collection.

OPP.63:487; PP.63:199; Z.XXIII:307

Deux hommes nus debout III. Mougins. 5-September/1963. Color crayons & graphite [OïC]. [28,5 x 14,5] 24 x 15,5 cm. Private collection.

OPP.63:489; PP.63:200; Z.XXIII:309





Trois personnages II. Mougins. 5, 8, 10-September/1963. Color crayons & graphite [OIC]. [28,5 x 14,5] 24 x 15,5 cm. Private collection.

OPP.63:488; PP.63:208; Z.XXIII:308

Femme nue allongée IX. Mougins. 8-September/1963. Graphite & color pencil on paper. 28,5 x 14,5 cm. Private collection.

OPP.63:404; PP.63:207; Z.XXIII:318; BA.90a*:69; GG.86*:169; MA.91a*:81





Deux hommes nus debout III. Mougins. 8-September/1963. Wax crayons [OïC]. 24 x 15,5 cm. Private collection.

OPP.63:439; PP.63:203; Z.XXIII:312

Homme assis I. Mougins. 8-September/1963. Color crayons [OïC]. [28,5 x 14,5] 24 x 15,5 cm. Private collection.

OPP.63:490; PP.63:202; Z.XXIII:310





Deux hommes nus V. Mougins. 8-September/1963. Graphite. [28,5 x 14,5] 24 x 15,5 cm. Private collection.

OPP.63:492; PP.63:204; Z.XXIII:314

Deux femmes nues VII. Mougins. 8-September/1963. Color crayons & graphite [OiC]. [28,5 x 14,5] 24 x 15,5 cm. Private collection.

OPP.63:494; PP.63:205; Z.XXIII:316





Deux femmes nues debout VIII. Mougins. 8-September/1963. Color crayons & graphite [OIC]. [28,5 x 14,5] 24 x 15,5 cm. Private collection.

OPP.63:495; PP.63:206; Z.XXIII:317

Femme debout II. Mougins. 8, 10-September/1963. Graphite & color pencil on paper. 14,5 x 28,5 cm. Private collection.

OPP.63:403; PP.63:209; Z.XXIII:311; BA.90a*:69; GG.86*:169; MA.91a*:81





Tête d'homme barbu IV. Mougins. 8, 10-September/1963. Color crayons [OïC]. [28,5 x 14,5] 24 x 15,5 cm. Private collection.

OPP.63:491; PP.63:210; Z.XXIII:313

Deux hommes nus V. Mougins. 8~10-September/1963. Color crayons [OïC]. [28,5 x 14,5] 24 x 15,5 cm. Private collection.

OPP.63:493; PP.63:211; Z.XXIII:315





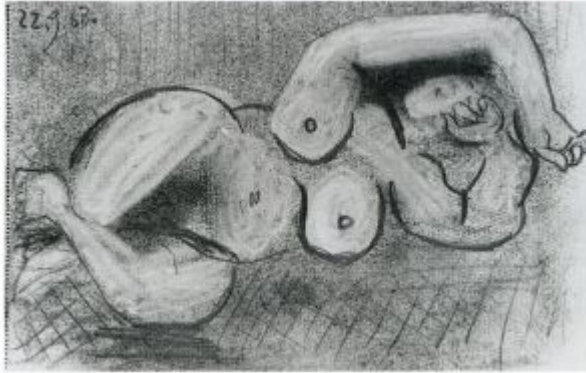
Femme nue couchée. Mougins. 11-September/1963. Charcoal & color crayon [Oic]. [14,5 x 28,2] 15,5 x 24 cm. Private collection.

OPP.63:496; PP.63:213; Z.XXIII:319

Femme nue couchée. Mougins. 14-September/1963. Graphite & Color pencil on paper. 28,5 x 14,5 cm. Private collection.

OPP.63:405; PP.63:214; Z.XXIII:320; BA.90a*:69; GG.86*:169; MA.91a*:81



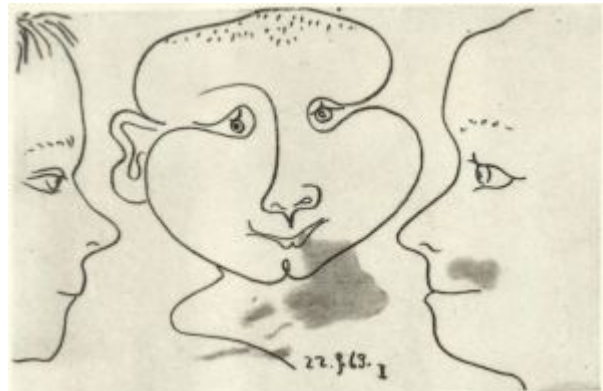


Femme nue couchée IX. Mougins. 22-September/1963. Graphite on paper. 28,5 x 14,5 cm. Private collection.

OPP.63:406; PP.63:221; Z.XXIII:321; BA.90a*:69; GG.86*:169; MA.91a*:81

Trois têtes I. Mougins. 22-September/1963. Graphite on paper. [14,5 x 28,2] 15,5 x 24 cm. Private collection.

OPP.63:497; PP.63:222; Z.XXIII:322





Trois têtes IV. Mougins. 22-September/1963.
Graphite on paper. [14,5 x 28,2] 15,5 x 24 cm.
Private collection.

OPP.63:500; PP.63:225; Z.XXIII:325

Trois têtes VI. Mougins. 22-
September/1963. Graphite on paper. [14,5
x 28,2] 15,5 x 24 cm. Private collection.

OPP.63:501; PP.63:227; Z.XXIII:327





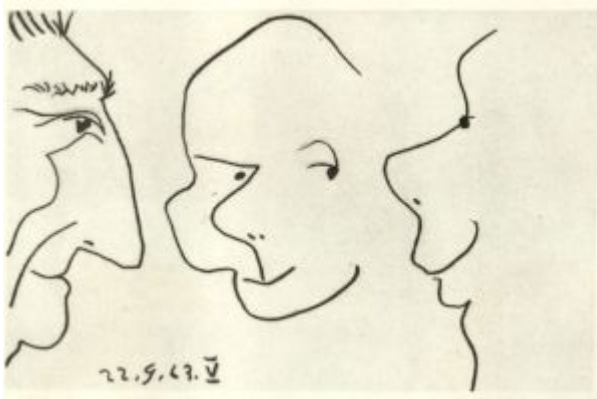
Trois têtes VI. Mougins. 22-September/1963.
Color crayons & graphite [OIC]. [14,5 x 28,2] 15,5
x 24 cm. Private collection.

OPP.63:502; PP.63:228; Z.XXIII:328

Trois têtes VIII. Mougins. 22-
September/1963. Color crayons & graphite
[OIC]. [14,5 x 28,2] 15,5 x 24 cm. Private
collection.

OPP.63:503; PP.63:229; Z.XXIII:329





Trois têtes V. Mougins. 22-September/1963.
Graphite on paper. [14,5 x 28,2] 15,5 x 24 cm.
Private collection.

OPP.63:506; PP.63:226; Z.XXIII:326

Trois têtes II. Mougins. 22-September, 9-
October/1963. Color crayons & graphite
[OIC]. [14,5 x 28,2] 15,5 x 24 cm. Private
collection.

OPP.63:498; PP.63:223; Z.XXIII:323





Trois têtes I. Mougins. 22-September, 9-October/1963. Color crayons & graphite [OïC]. [14,5 x 28,2] 15,5 x 24 cm. Private collection.

OPP.63:499; PP.63:224; Z.XXIII:324

Trois têtes IX. Mougins. 22-September~9, 10, 12-October/1963. Color crayons & graphite [OïC]. [14,5 x 28,2] 15,5 x 24 cm. Private collection.

OPP.63:504; PP.63:230; Z.XXIII:330





L'étreinte. Mougins. October/1963. Ink on reused linoleum cut. 62 x 75 cm. Private collection.

OPP.63:535; PP.63:257; Z.XXIII:371

L'étreinte. Mougins. October/1963. Ink on reused linoleum cut. 62 x 75 cm. Private collection.

OPP.63:536; PP.63:258; Z.XXIII:372





L'étreinte. Mougins. October/1963. Ink on reused linoleum cut (gray version). 62 x 75 cm. Private collection.

OPP.63:537; PP.63:259; Z.XXIII:373

Pichet à décor géométrique. Vallauris. 3-October/1963. Painted ceramic; tall jug. 37,6 cm. Sotheby's. #69, N09727, 05/18/17. Formerly Marina Picasso Collection.

OPP.63:415



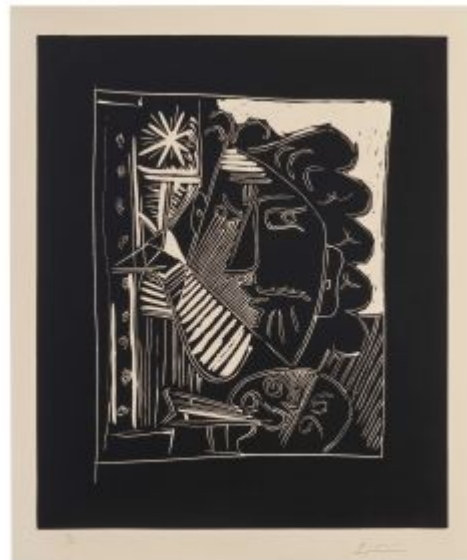


Vase croix. Vallauris. 3-October/1963. White earthenware vase with black engobe. 31 cm. Artcurial. #103, 3310, 10/10/17. Formerly Paul Lombard Collection.

OPP.63:429

Le peintre à la palette. Mougins. 3~4-October/1963. Linoleum cut on Arches, edition 150. 64,1 x 53,2 cm. Christie's. #273, 9512, 10/31/00.

OPP.63:010; B.I:1153; Ba:1342; CC.01*:53p; MF.10*:94p; MM.11b*:76





Hibou. Vallauris. 5-October/1963. Painted ceramic vase. 59 x 44 cm. Museo Picasso, Colección Eugenio Arias, Buitrago del Lozoya. (Inv 1).

OPP.63:213; JR.90:1

Abstraction informelle. Vallauris. 5-October/1963. Painted ceramic wide-bellied vase. 38 cm. Sotheby's. #139, L15007, 06/25/15.

OPP.63:361; BU.22:77p





Abstraction japonaise. Vallauris. 5-October/1963. Painted ceramic vase. 42,5 cm. Sotheby's. #140, L15007, 06/25/15.

OPP.63:362; KU.99*:72

Grand pichet à décor informel. Vallauris. 5-October/1963. Painted ceramic tall jug. 41,5 cm. Sotheby's. #579, L16005, 02/05/16.

OPP.63:384; GE.04*:n/a; KU.99*:73





Portrait de Jacqueline (Para mi amigo Arias). Mougins. 6-October/1963. Pastel & pencil on paper (In *La Guerre et la Paix*, de Claude Roy. Paris, Cercle d'Art, 1954). 36,5 x 20 cm. Museo Picasso, Colección Eugenio Arias, Buitrago del Lozoya. (Inv 9).

OPP.63:214; CM.01:8; CM.02:8; FC.00*:105; JR.90:9; MG.90*:n/a

Note autographe à Inès Sassier.
Mougins. 7-October/1963. Ink. S/U.
Artcurial. #323, 1331, 10/22/07. Formerly
Inès and Gérard Sassier Collection.

OPP.63:234

mon M.D. de Vie - Mougins
A.M

Le 7.10.63.

Ma chère Inès
voici le chèque pour
les enfants & porter
à Monsieur de Garricac.

Merci
pour vous
et les autres.
à vous
+10

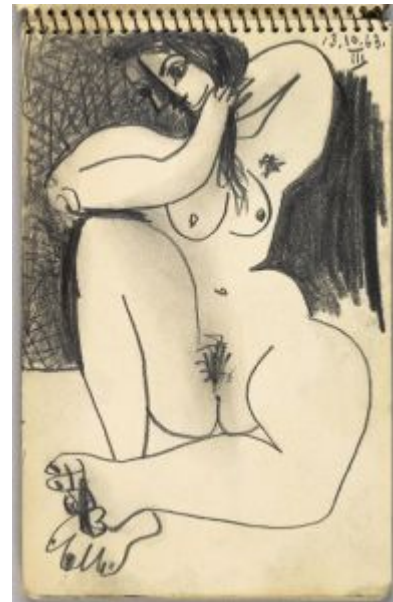


Nu assis dans un fauteuil II. Mougins. 13-October/1963. Black crayon, graphite stick, colored pencil & wax crayon on Ingres paper. 21,5 x 13,5 cm. Musée Picasso, Paris. Carnet 1072. Jacqueline Roque Picasso Collection. Dation 1990.

OPP.63:260; MPP:1990.115.02r; PP.63:232; Z.XXIII:335; BL.96:57.02r; GR.90*:112; JC.01a*:221a; PA.21f*:154

Nu assis III. Mougins. 13-October/1963. Black crayon, graphite stick, colored pencil & wax crayon on Ingres paper. [20,5 x 13,5] 21 x 13,5 cm. Musée Picasso, Paris. Carnet 1072. Jacqueline Roque Picasso Collection. Dation 1990.

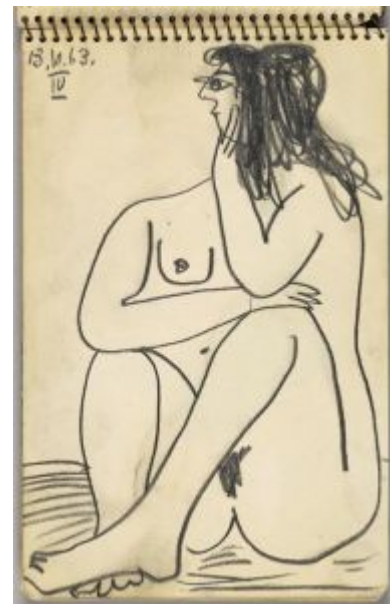
OPP.63:261; MPP:1990.115.03r; PP.63:233; Z.XXIII:336; BL.96:57.3r; GR.90*:112; JC.01a*:221b





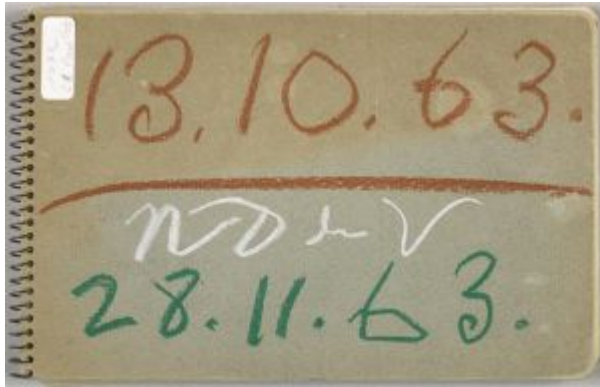
Nu assis. Mougins. 13-October/1963. Black pencil on paper. 20,5 x 13,5 cm. Musée Picasso, Paris. Sketchbook 1072. Jacqueline Roque Picasso Collection. Dation 1990.

OPP.63:408; MPP:1990.115.01r; PP.63:231; Z.XXIII:334;
BL.96:57.1r; GR.90*:112



Nu assis IV. Mougins. 13-October/1963. Black pencil on paper. 20,5 x 13,5 cm. Musée Picasso, Paris. Sketchbook 1072. Jacqueline Roque Picasso Collection. Dation 1990.

OPP.63:409; MPP:1990.115.04r; PP.63:234; Z.XXIII:337;
BL.96:57.4r; GR.90*:112



Couverture. Mougins. 13-October~28-November/1963. Pencil on paper. 20,5 x 13,5 cm. Musée Picasso, Paris. Sketchbook 1072. Jacqueline Roque Picasso Collection. Dation 1990.

OPP.63:407; MPP:1990.115.c4; BL.96:57.c4; GR.90*:112

2e de couverture. Mougins. 13-October~28-November/1963. Mixed media. 21,5 x 13,5 cm. Musée Picasso, Paris. Carnet 1072. Jacqueline Roque Picasso Collection. Dation 1990.

OPP.63:570; MPP:1990.115.c2; BL.96:57.c2





3e de couverture. Mougins. 13-October~28-November/1963. Mixed media. 21,5 x 13,5 cm. Musée Picasso, Paris. Carnet 1072. Jacqueline Roque Picasso Collection. Dation 1990.

OPP.63:571; MPP:1990.115.c3; BL.96:57.c3

La pique III. Mougins. [13-October~/1963~4-January/1964. Linoleum cut rincé with encre de Chine on Arches, edition 50. 62 x 750 cm. Christie's. #254, 6399, 12/05/00.

OPP.63:016; Ba:1243





Danseuse. Mougins. 14-October/1963. Crayon on paper. 24 x 19 cm. Bloomsbury. #321, 35886, 03/29/12.

OPP.63:351

Étreinte I (I). Mougins. 14-October/1963. Burin & etching on Rives paper. 42,3 x 57,6 cm. Musée Picasso, Paris. Dation 1979.

OPP.63:430; Ba:1103.1; MPP:2709





Étreinte I (II). Mougins. 14-October/1963. Etching & sandpaper. 42,4 x 57,4 cm. Musée Picasso, Paris. Dation 1979.

OPP.63:431; Ba:1103.2; MPP:2710

Étreinte I (III). Mougins. 14-October/1963. Etching, sandpaper & scraper. 42,5 x 57,5 cm. Musée Picasso, Paris. Dation 1979.

OPP.63:433; Ba:1103.3; MPP:2711





Étreinte I (IV). Mougins. 14-October/1963.
Etching, sandpaper, scraper, drypoint & burin. 42,3
x 57,5 cm. Musée Picasso, Paris. Dation 1979.

OPP.63:434; Ba:1103.4; MPP:2712

Étreinte I. Mougins. 14-October/1963.
Etching, sandpaper, scraper, drypoint &
burin. 42,3 x 57,4 cm. Musée Picasso,
Paris. Dation 1979.

OPP.63:593; Ba:1103.5; MPP:2713





L'Étreinte I. Mougins. [14] 15-October/1963. Etching & drypoint on BFK Rives wove paper, edition 50. [42,3 x 57,5] 42,7 x 56,8 cm. Christie's. #270, 9512, 10/31/00.

OPP.63:008; B.I:1110; Ba:1103.5Bb2; JC.01a*:222

L'Étreinte II. Mougins. 15-October/1963. Linoleum cut rincé printed in cream white with encre de chine, edition 50. 53 x 64 cm. Staatsgalerie Stuttgart. (Inv A 91/6571). Graphische Sammlung. Also Sotheby's. #242, L01171, 07/06/01.

OPP.63:043; B.I:1151; Ba:1343; ED.07*:84; HN.00*:83; RP.81:26.8; TI.71:95p





L'Étreinte I. Mougins. 15-October/1963. Linoleum cut on Arches, edition 50. 53 x 63,8 cm. Christie's. #234, 1074, 05/01/02.

OPP.63:047; B.I:1150; Ba:1344.B; MPB:70312; HN.00*:84

L'Étreinte II. Mougins. 15-October/1963. Etching on BFK Rives wove paper, edition 50. 42,5 x 57,2 cm. Sotheby's. #288, N08021, 10/29/04. Also Museu Picasso, Barcelona.

OPP.63:092; B.I:1111; Ba:1104.Bb2; MPB:70.415; HN.00*:82; JC.01a*:223; RP.06*:123





Étreinte II. Mougins. 15-October/1963. Linoleum cut. 53,1 x 63,7 cm. Musée Picasso, Paris. Dation 1979.

OPP.63:293; Ba:1344; MPP:3504

Nu couché I. Mougins. 17-October/1963. Black crayon, graphite stick, colored pencil & wax crayon on Ingres paper. 13,5 x 21,5 cm. Musée Picasso, Paris. Carnet 1072. Jacqueline Roque Picasso Collection. Dation 1990.

OPP.63:262; MPP:1990.115.05r;
PP.63:235; Z.XXIII:331; BL.96:57.5r;
GR.90*:112; JC.01a*:221c





Caricature: tête d'homme II. Mougins. 17-October/1963. Black pencil. 20,5 x 13,5 cm. Musée Picasso, Paris. Sketchbook 1072. Jacqueline Roque Picasso Collection. Dation 1990.

OPP.63:410; MPP:1990.115.06r; PP.63:236; Z.XXIII:332; BL.96:57.6r; GR.90*:112

Le tireur d'épines IV. Mougins. 17-October/1963. Black pencil on paper. 20,5 x 13,5 cm. Musée Picasso, Paris. Sketchbook 1072. Jacqueline Roque Picasso Collection. Dation 1990.

OPP.63:411; MPP:1990.115.09r; PP.63:239; Z.XXIII:339; BL.96:57.9r; GR.90*:112





Tête III. Mougins. 17-October/1963. Graphite on paper. [20,5 x 13,5] 21 x 13,5 cm. Musée Picasso, Paris. Sketchbook 1072. Jacqueline Roque Picasso Collection. Dation 1990.

OPP.63:505; MPP:1990.115.07r; PP.63:237; Z.XXIII:333; BL.96:57.7r

Deux têtes IV. Mougins. 17-October/1963. Graphite on paper. [20,5 x 13,5] 21 x 13,5 cm. Musée Picasso, Paris. Carnet 1072. Jacqueline Roque Picasso Collection. Dation 1990.

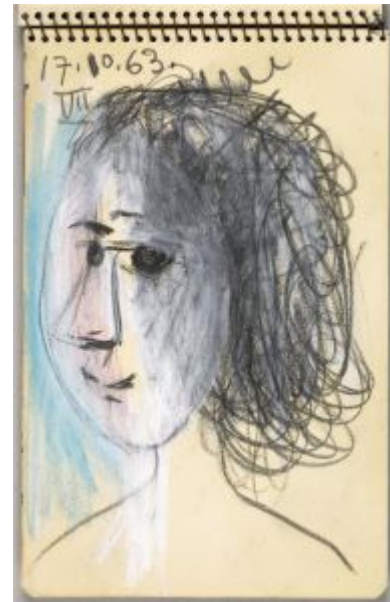
OPP.63:507; MPP:1990.115.08r; PP.63:238; Z.XXIII:338; BL.96:57.08r





Deux têtes VI. Mougins. 17-October/1963. Color crayons & graphite. [20,5 x 13,5] 21 x 13,5 cm. Musée Picasso, Paris. Carnet 1072. Jacqueline Roque Picasso Collection. Dation 1990.

OPP.63:508; MPP:1990.115.10r; PP.63:240; Z.XXIII:340; BL.96:57.10r



Tête de femme VII. Mougins. 17-October/1963. Color crayons & graphite. 21 x 13,5 cm. Musée Picasso, Paris. Carnet 1072. Jacqueline Roque Picasso Collection. Dation 1990.

OPP.63:509; MPP:1990.115.11r; PP.63:241; Z.XXIII:341; BL.96:57.11r



Viel homme, femme et enfant III. Mougins. 18-October/1963. Graphite on paper. 20,5 x 13,5 cm. Musée Picasso, Paris. Sketchbook 1072. Jacqueline Roque Picasso Collection. Dation 1990.

OPP.63:412; MPP:1990.115.12r; PP.63:242; Z.XXIII:342; BL.96:57.12r; GR.90*:112

Femme et vieil homme assis à la canne VI. Mougins. 18-October/1963. Graphite on paper. 20,5 x 13,5 cm. Musée Picasso, Paris. Sketchbook 1072. Jacqueline Roque Picasso Collection. Dation 1990.

OPP.63:413; MPP:1990.115.17r; PP.63:247; Z.XXIII:347; BL.96:57.17r; GR.90*:112





Homme assis à la canne et profil de femme nue II. Mougins. 18-October/1963. Graphite on paper. 21 x 13,5 cm. Musée Picasso, Paris. Carnet 1072. Jacqueline Roque Picasso Collection. Dation 1990.

OPP.63:510; MPP:1990.115.13r; PP.63:243; Z.XXIII:343; BL.96:57.13r

Homme assis à la canne III. Mougins. 18-October/1963. Graphite on paper. 21 x 13,5 cm. Musée Picasso, Paris. Carnet 1072. Jacqueline Roque Picasso Collection. Dation 1990.

OPP.63:511; MPP:1990.115.14r; PP.63:244; Z.XXIII:344; BL.96:57.14r





Homme assis à la canne et femme de profil IV. Mougins. 18-October/1963. Graphite on paper. 21 x 13,5 cm. Musée Picasso, Paris. Carnet 1072. Jacqueline Roque Picasso Collection. Dation 1990.

OPP.63:512; MPP:1990.115.15r; PP.63:245; Z.XXIII:345; BL.96:57.15r

Homme assis à la canne et femme de profil V. Mougins. 18-October/1963. Graphite on paper. 21 x 13,5 cm. Musée Picasso, Paris. Carnet 1072. Jacqueline Roque Picasso Collection. Dation 1990.

OPP.63:513; MPP:1990.115.16r; PP.63:246; Z.XXIII:346; BL.96:57.16r





Homme assis à la canne et femme de profil VII. Mougins. 18-October/1963. Graphite on paper. 21 x 13,5 cm. Musée Picasso, Paris. Carnet 1072. Jacqueline Roque Picasso Collection. Dation 1990.

OPP.63:514; MPP:1990.115.18r; PP.63:248; Z.XXIII:348; BL.96:57.18r

L'étreinte. Mougins. 20-October/1963. Etching, edition 50. 34,6 x 42,5 cm. Christie's. #176, 8575, 09/12/01.

OPP.63:032; B.I:1114; Ba:1107.Bb2





Étreinte III. Mougins. 20-October/1963. Etching on wove paper, edition 50. [42,3 x 47,3] 42,5 x 57 cm. Sotheby's. #132, L03160, 03/25/03. Also Museu Picasso, Barcelona.

OPP.63:060; B.I:1112; Ba:1105.Bb2;
MPB:70.423; JC.01a*:224

L'Étreinte IV. Mougins. 20-October/1963. Drypoint printed with tone on BFK Rives, edition 50. 34,6 x 42,3 cm. Christie's. #283, 6960, 11/30/04. Also Museu Picasso, Barcelona.

OPP.63:095; B.I:1113; Ba:1106.VBb;
MPB:70.420; JR.09*:233p





L'etreuseinte I. Mougins. 23-October/1963. Aquatint on wove paper, edition 50. [32 x 42] 31,3 x 41,6 cm. Christie's. #174, 1292, 11/04/03.

OPP.63:073; B.I:1115; Ba:1108.IIIb2;
GS.83*:124; KK.93:32

L'etreuseinte VIII. Mougins. 23-October/1963. Aquatint on BFK Rives paper, edition 50. [34,6 x 42,3] 34,5 x 42 cm. Sotheby's. #296, L04162, 12/02/04. Also Museu Picasso, Barcelona.

OPP.63:094; B.I:1116; Ba:1110.Bb2;
MPB:70.421; HN.00*:80; JC.01a*:225





Homme assis à la canne et femme nue I. Mougins. 24-October/1963. Graphite on paper. 21 x 13,5 cm. Musée Picasso, Paris. Carnet 1072. Jacqueline Roque Picasso Collection. Dation 1990.

OPP.63:515; MPP:1990.115.19r; PP.63:249; Z.XXIII:349; BL.96:57.19r

Homme assis à la canne et femme nue II. Mougins. 24-October/1963. Graphite on paper. 21 x 13,5 cm. Musée Picasso, Paris. Carnet 1072. Jacqueline Roque Picasso Collection. Dation 1990.

OPP.63:516; MPP:1990.115.20r; PP.63:250; Z.XXIII:350; BL.96:57.20r





Homme assis à la canne et femme nue III. Mougins. 24-October/1963. Graphite on paper. 21 x 13,5 cm. Musée Picasso, Paris. Carnet 1072. Jacqueline Roque Picasso Collection. Dation 1990.

OPP.63:517; MPP:1990.115.21r; PP.63:251; Z.XXIII:351; BL.96:57.21r

Homme assis à la canne et nu de dos V. Mougins. 24-October/1963. Graphite on paper. 21 x 13,5 cm. Musée Picasso, Paris. Carnet 1072. Jacqueline Roque Picasso Collection. Dation 1990.

OPP.63:518; MPP:1990.115.23r; PP.63:253; Z.XXIII:352; BL.96:57.23r





Trois personnages VI. Mougins. 24-October/1963. Graphite on paper. 21 x 13,5 cm. Musée Picasso, Paris. Carnet 1072. Jacqueline Roque Picasso Collection. Dation 1990.

OPP.63:519; MPP:1990.115.24r; PP.63:254; Z.XXIII:353; BL.96:57.24r

Vieil homme assis à la canne contemplant un nu sculpté IV. Mougins. 24-October/1963. Black pencil on paper. 21,5 x 13,5 cm. Musée Picasso, Paris. Carnet 1072. Jacqueline Roque Picasso Collection. Dation 1990.

OPP.63:569; MPP:1990.115.22r; PP.63:252; BL.96:57.22r





L'etreuse. Mougins. 24-October/1963. Dedicated proof. 53 x 64 cm. Private collection.

OPP.63:615; B.I:1362

Femme et homme barbu assis à la canne. Mougins. 27-October/1963. Graphite on paper. 20,5 x 13,5 cm. Musée Picasso, Paris. Sketchbook 1072. Jacqueline Roque Picasso Collection. Dation 1990.

OPP.63:414; MPP:1990.115.25r; PP.63:255; Z.XXIII:354; BL.96:57.25r; GR.90*:112





Portrait de Mademoiselle Angela Rosengart. Mougins. 29-October/1963. Linoleum cut overpainted with India ink. 64 x 53 cm. Kunsthaus Zürich. Graphische Sammlung. Depositum Gotfried Keller-Stiftung.

OPP.63:376; B.I:1366; MD.02*:305p

Peintre au travail. Mougins. 31-October/1963. Etching on BFK Rives, edition 50. 31,5 x 41,6 cm. Christie's. #167, 6740, 07/02/03.

OPP.63:071; B.I:1117; Ba:1111.Bb2; KK.93:33





Dans l'atelier du sculpteur. Mougins. 31-October/1963. Etching on Richard de Bas wove paper, edition 50. 31,5 x 41,7 cm. Christie's. #324, 6740, 07/02/03.

OPP.63:072; B.I:1118; Ba:1112.Bb2; GE.66*:4; KK.93:35

Peintre au travail. Mougins. 1-November/1963. Drypoint on BFK Rives, edition 50. 31,5 x 41,2 cm. Christie's. #177, 8575, 09/12/01.

OPP.63:033; B.I:1121; Ba:115.Bb2; KK.93:34





Dans l'atelier. Mougins. 1-November/1963.
Aquatint with burin & drypoint on BFK, edition 50.
19,7 x 23,8 cm. Christie's. #233, 1074, 05/01/02.

OPP.63:048; B.I:1119; Ba:1113.Bb2

Peintre au travail. Mougins. 1-
November/1963. Aquatint & etching,
edition 50. 31,3 x 41,2 cm. Sotheby's.
#182, N08436, 05/01/08.

OPP.63:232; B.I:1122; Ba:1116.IVBb2





Peintre et modèle nu assis avec une spectatrice. Mougins. 1-November/1963. Aquatint & drypoint. 19,6 x 23,7 cm. Sotheby's. #129, PF1334, 02/25/13.

OPP.63:310; B.I:1120; Ba:1114.IIBb2

Atelier. Mougins. 1-November/1963. Pencil on colored paper. 36 x 42,5 cm. Private collection.

OPP.63:321; MF.10*:209p





Homme de profil à gauche. Mougins. 6-November/1963.
Lithograph on Arches. 60,3 x 40,6 cm. Christie's. #340, 1322,
04/28/03.

OPP.63:053; M:396

Tête de jeune (Visage tourné à droite). Mougins. 6-
November/1963. Lithograph on Arches. [61,3 x 44,8]
66,5 x 50,8 cm. Christie's. #171, 6683, 10/09/02.

OPP.63:055; M:389





Femme de profil droit. Mougins. 6-November/1963.
Lithograph on Arches. 61,6 x 46 cm. Christie's. #335, 1322,
04/28/03.

OPP.63:061; M:391

Homme barbu de profil gauche. Mougins. [6-
November]/1963. Lithograph on Arches. 58,4 x 44,5 cm.
Christie's. #341, 1322, 04/28/03.

OPP.63:062; M:397





Homme barbu de profil gauche. Mougins. 6-November/1963. Lithograph on Arches. 60,9 x 44,9 cm. Christie's. #334, 1322, 04/28/03.

OPP.63:063; M:390

Femme de profil droit. Mougins. 6-November/1963. Lithograph on Arches. 62,2 x 46 cm. Christie's. #336, 1322, 04/28/03.

OPP.63:064; M:392





Visage de jeune femme. Mougins. 6-November/1963.
Lithograph on Arches. 62,2 x 46,3 cm. Christie's. #339, 1322,
04/28/03.

OPP.63:065; M:395

Jeune femme de profil droit. Mougins. 6-
November/1963. Lithograph on Arches. 61,4 x 41,8 cm.
Christie's. #337, 1322, 04/28/03.

OPP.63:067; M:393



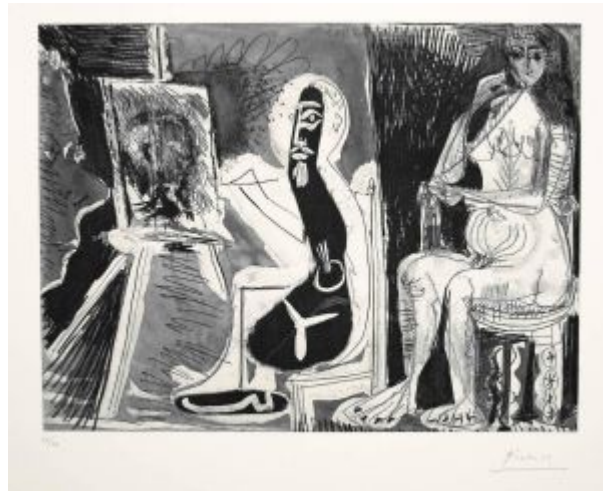


Femme de profil droit. Mougins. 6-November/1963.
Lithograph on Arches. 62,2 x 45,7 cm. Christie's. #338, 1322,
04/28/03.

OPP.63:068; M:394

Dans l'atelier. Mougins. 8-
November/1963. Aquatint & etching, 1963,
on wove paper, edition 50. [31,4 x 41,6] 32
x 42 cm. Christie's. #0391, 1897,
10/30/07.

OPP.63:224; B.I:1123; Ba:1117.IIIBb2;
GS.83*:125



Quel chose j'ai
voici le cheque
pour les enfants à porter
chez M^{me} de Serriae
Le bon ambrose
votre pino
le 8.11.63.

Note autographe à Inès Sassier. Mougins. 8-
November/1963. Ink. S/U. Artcurial. #324, 1131,
10/22/07. Formerly Inès and Gérard Sassier
Collection.

OPP.63:235

Scène d'atelier. Mougins. 9-
November/1963. Etching & engraving on
Rives BFK paper. 32 x 42 cm. Bonhams.
#177, 19353, 10/25/11.

OPP.63:296; B.I:1124; Ba:1118.Bb2





Le peintre avec un modèle assis en tailleur et un visiteur. Mougins. 9-November/1963. Copper plate for *Le peintre avec un modèle assis en tailleur et un visiteur*. 11,2 x 23,5 cm. Musée Picasso, Paris. Don des héritiers Picasso en 1982.

OPP.63:426; MPP:1982.58

Le peintre avec un modèle assis en tailleur et un visiteur. Mougins. 9-November/1963. Etching. 11,2 x 23,5 cm. Musée Picasso, Paris. Dation 1979.

OPP.63:428; Ba:1119; MPP:2737





Le peintre et son modèle. Mougins. 10-November/1963. Etching, burin & aquatint, edition 50. 38,1 x 50,3 cm. Janet Lehr Inc / Vered Gallery. 2005.

OPP.63:110; B.I:1125; Ba:1120.IIbb2

Peintre au travail. Mougins. 10-November/1963. Etching on Rives BFK, edition 50. 31,8 x 41,6 cm. Christie's. #0219, 1990, 04/29/08.

OPP.63:231; B.I:1126; Ba:1121.Bb2





Deux femmes I. Mougins. 11-November/1963.
Etching & aquatint on wove paper, edition 50. 31,4
x 41,6 cm. Christie's. #269, 1654, 05/01/06.

OPP.63:066; B.I:1127; Ba:1122.Bb2;
BA.90a*:140

Scène d'Intérieur: L'atelier. Mougins.
13-November/1963. Aquatint, edition 50.
[32 x 42] 31,5 x 41,2 cm. Bonhams. #66,
18284, 09/23/10.

OPP.63:006; B.I:1128; Ba:1125.IIBb2





Le peintre et son modèle. Mougins. 16-
November/1963. Graphite on paper. 32 x 50 cm.
Private collection.

OPP.63:520; PP.63:260; Z.XXIII:356

Tête d'homme à la pipe: profil. Mougins. 16-
November/1963. Graphite on paper. 27,8 x 19,4 cm.
Private collection.

OPP.63:521; PP.63:261; Z.XXIII:357





Tête d'homme à la pipe et femme nue. Mougins. 16-November/1963. Graphite on paper. 27,8 x 19,4 cm. Private collection.

OPP.63:522; PP.63:262; Z.XXIII:358

'Les bleus de Barcelone' (Jaume Sabartés, Les Bleus de Barcelone). Mougins. 17-November/1963. Aquatint on Richard-de-Bas wove paper, edition 75. 42,2 x 55 cm. Christie's. #263, 6399, 12/05/00.

OPP.63:017; B.I:1130; Ba:1127.Bc; GC:122





Peintre au travail. Mougins. 17-November/1963. Etching with aquatint on BFK Rives paper, edition 50. 33 x 23 cm. Sotheby's. #146, L02192, 07/02/02.

OPP.63:052; B.I:1129; Ba:1126.Bb2

Le peintre et son modèle. Mougins. 18-November/1963. Etching & aquatint, edition 50. 32,5 x 44,5 cm. Christie's. #237, 1719, 10/31/06.

OPP.63:020; B.I:1134; Ba:1131.Bb2;
GE.66*:7; KK.93:46





Le peintre et son modèle. Mougins. 18-
November/1963. Aquatint & buril. 115,6 x 144,3
cm. Galería Enrique Guerrero. 2005.

OPP.63:108; B.I:1133; Ba:1130.Bb2; GE.66*:8;
KK.93:19; ME.99*:n/a

Peintre et modéle. Mougins. 18-
November/1963. Etching on wove, edition
50. 31,6 x 41,6 cm. Christie's. #322, 7282,
09/20/06.

OPP.63:173; B.I:1132; Ba:1129.Bb2;
KK.93:47





Le peintre et son modèle (Hélène Parmelin, Les Dames de Mougins). Mougins. 18-November/1963. Aquatint, edition 125. [11,5 x 24] 11,1 x 23,4 cm. Christie's. #413, 1412, 09/28/04.

OPP.63:176; B.I:1131; Ba:1128; GC:127; HP.66:6p

Étreinte VII. Mougins. 23-November/1963. Aquatint & drypoint. 31,5 x 41,5 cm. Sotheby's. #143, PF1334, 02/25/13.

OPP.63:054; B.I:1135; Ba:1109.IIIBb2



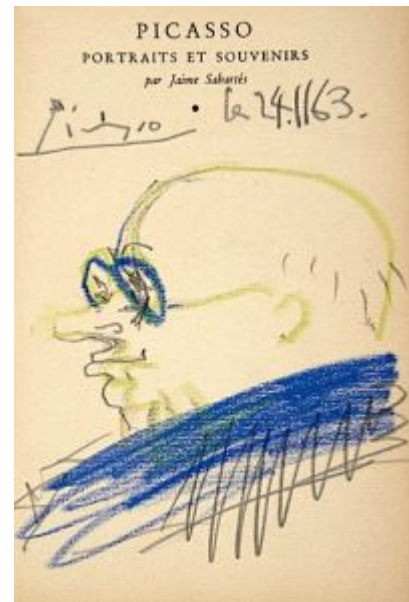


Asturias 1963. Mougins. 23-November/1963. Photomecanic impression. 49 x 32 cm. Museo Picasso, Colección Eugenio Arias, Buitrago del Lozoya. (Inv 49).

OPP.63:125; B.I:1182; EP.03:21; JR.90:49; PF.10:37p

Portrait de Jaume Sabartés. Paris. 24-November/1963. Pencil & pastel. S/U. Artcurial. #428, 1320, 11/26/07.

OPP.63:241





L'atelier du peintre. Mougins. 26-
November/1963. Aquatint & drypoint, edition 50.
23 x 33 cm. Sotheby's. #233, N08358, 11/01/07.

OPP.63:223; B.I:1136; Ba:1133.Bb2; GE.66*:6

Dans l'atelier. Mougins. 27-
November/1963. Etching on wove paper,
edition 50. [43 x 58] 42,4 x 57,5 cm. Tate
Modern, London. Presented by Gustav &
Elly Kahnweiler 1974 & accessioned 1994.
(Inv P11363). Also Christie's. #325, 6740,
07/02/03.

OPP.63:098; B.I:1137; Ba:1134.Bb2





Dans l'atelier. Mougins. 27-November/1963. Aquatint & etching on Rives BFK paper. 23,5 x 33,5 cm. Bonhams. #119, 17526, 11/03/09.

OPP.63:299; B.I:1138; Ba:1135.IIBb2

Le peintre dans l'atelier. Mougins. 28-November/1963. Black crayon, graphite stick, colored pencil & wax crayon on Ingres paper. 21,5 x 13,5 cm. Musée Picasso, Paris. Sketchbook 1072. Jacqueline Roque Picasso Collection. Dation 1990.

OPP.63:263; MPP:1990.115.26r; PP.63:256; Z.XXIII:355; BL.96:57.26r; GR.90*:112





Tête de femme: profil. Mougins. 29-November/1963.
Gouache & color crayon [OïC]. 75 x 62 cm. Private collection.
Formerly Sotheby's. #924, 05/22/81.

OPP.63:523; PP.63:263; Z.XXIII:359

Faune et chèvre. Mougins. December/1963.
Gouache over linoleum cut rincé in blanc crème &
black heightened with encre de Chine. 74,8 x 61,7
cm. Christie's. #153, 2889, 11/06/14.

OPP.63:046; Ba:1350.I; PP.63:275; Z.XXIII:385





Faune et chèvre. Mougins. December/1963. Reused linoleum cut. 75 x 62 cm. Private collection.

OPP.63:465; PP.63:280; Z.XXIII:393

Le peintre et son modèle. Mougins. December/1963. Ink on reused linoleum cut, with Siena edges. 62 x 75 cm. Private collection.

OPP.63:538; PP.63:265; Z.XXIII:374





Le peintre et son modèle. Mougins.
December/1963. Ink on reused linoleum cut, with
emerald edges. 62 x 75 cm. Private collection.

OPP.63:539; PP.63:266; Z.XXIII:375

Le peintre et son modèle. Mougins.
December/1963. Ink on linoleum cut with
gray background. 62 x 75 cm. Private
collection.

OPP.63:540; PP.63:267; Z.XXIII:376





Le peintre et son modèle. Mougins.
December/1963. Ink on reused linoleum cut, with
gray background. 62 x 75 cm. Private collection.

OPP.63:541; PP.63:268; Z.XXIII:377

Le peintre et son modèle. Mougins.
December/1963. Color crayon on linoleum
cut [OIC]. 62 x 75 cm. Private collection.

OPP.63:542; PP.63:269; Z.XXIII:378





Le peintre et son modèle. Mougins.
December/1963. Ink on reused linoleum cut, with
gray background. 62 x 75 cm. Private collection.

OPP.63:543; PP.63:270; Z.XXIII:379

Le peintre et son modèle. Mougins.
December/1963. Ink on reused linoleum
cut, with gray edge. 62 x 75 cm. Private
collection.

OPP.63:544; PP.63:271; Z.XXIII:380





Paysage avec faune et chèvre. Mougins. December/1963. Gouache on linoleum cut [OïC]. 75 x 62 cm. Private collection.

OPP.63:546; PP.63:264; Z.XXIII:384



Faune et chèvre. Mougins. December/1963. Gouache on linoleum cut [OïC]. 75 x 62 cm. Private collection.

OPP.63:547; PP.63:276; Z.XXIII:386



Faune et chèvre. Mougins. December/1963. India ink on linogravure. 75 x 62 cm. Private collection.

OPP.63:548; PP.63:277; Z.XXIII:387

Faune et chèvre. Mougins. December/1963. Gouache on linoleum cut [OIC]. 75 x 62 cm. Private collection.

OPP.63:549; PP.63:278; Z.XXIII:388





Dédicace (La Tauromaquia) (Pour mon cher ami). Mougins. 2-December/1963. Ink on paper. 35,5 x 50 cm. Bonhams. #52AR, 26710, 03/23/21.

OPP.63:576

Le peintre et son modèle (Hélène Parmelin, Le peintre et son modèle). Mougins. 4-December/1963. Etching, edition 150. [11.5] 11 x 23,5 cm. Christie's. #414, 1412, 09/28/04.

OPP.63:177; B.I:1139; Ba:1136.C; GC:130; HP.66:7p





Le peintre et son modèle. Mougins. 4-December/1963. Etching. [11.5] 11 x 23,5 cm. Balclis, Barcelona. #1017, 10/19/11.

OPP.63:287; Ba:1136

Dans l'Atelier: Peintre, Modèle et Spectatrice. Mougins. 4-December/1963. Etching, on Auvergne Richard de Bas paper. 30,6 x 28,5 cm. Bonhams. #35*AR, 26710, 03/23/21.

OPP.63:578; Ba:1136.Bb





Dans l'atelier. Mougins. 5-December/1963. Etching & drypoint on wove paper, edition 50. [32 x 42] 31,1 x 41,6 cm. Christie's. #178, 8575, 09/12/01.

OPP.63:034; B.I:1140; Ba:1138.Bb2

L'atelier du peintre. Mougins. 5-December/1963. Etching on Richard de Bas wove paper, edition 50. 23,2 x 33 cm. Christie's. #326, 6740, 07/02/03.

OPP.63:070; B.I:1142; Ba:1140.Bc2; GE.66*:5





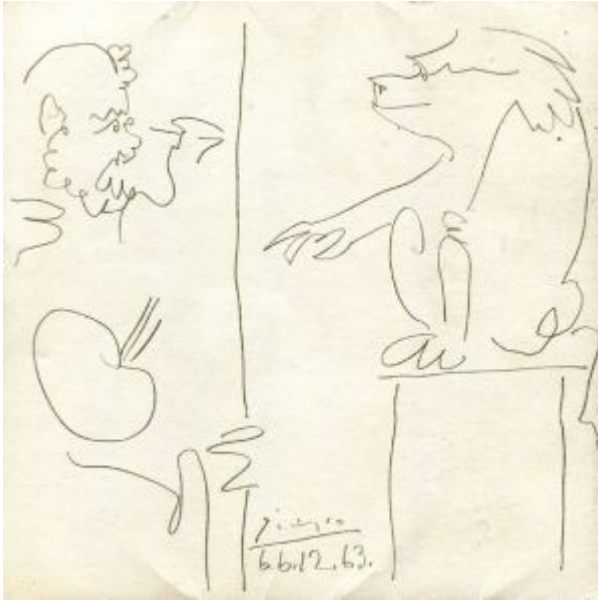
Le peintre et son modele IV. Mougins. 5-December/1963. Aquatint, etching & drypoint. [38 x 50] 32 x 41,9 cm. Staatsgalerie Stuttgart. (Inv A 6614447). Graphische Sammlung. Also Christie's. #238, 1719, 10/31/06.

OPP.63:109; B.I:1141; Ba:1139.Bb2;
ED.07*:85; GE.66*:2; GM.81*:329; GS.83*:128;
KB.01*:161

Le peintre et son modèle. Mougins. 6-December/1963. Aquatint, edition 50. 41,8 x 47,6 cm. Kunsthalle Bremen. Der Kunstverein in Bremen, Kupferstichkabinett. Also Sotheby's. #338, L08160, 04/01/08.

OPP.63:158; B.I:1143; Ba:1141.IIBb2;
GB.14*:166; GE.66*:1; KK.93:15;
LU.93:292; WW.91:589p





L'artiste dessinant un singe. Mougins. 6-December/1963. Pencil on page of catalogue Picasso - Peintures 1962-1963 à la Galerie Louise Leiris, Paris. S/U. Drouot. #655, 23348776, 11/30/23.

OPP.63:611

Dédicace (Pour mon ami Frua). Mougins. 6-December/1963. Color crayons on page of catalogue Picasso - Peintures 1962-1963 à la Galerie Louise Leiris, Paris. S/U. Drouot. #655, 23348776, 11/30/23.

OPP.63:612





L'artiste dessinant et son modèle. Mougins. 6-December/1963. Pencil on page of catalogue Picasso - Peintures 1962-1963 à la Galerie Louise Leiris, Paris. S/U. Drouot. #655, 23348776, 11/30/23.

OPP.63:613

Femme au chapeau à fleurs. Mougins. 6-December/1963. Frottage on linoleum for *Femme au chapeau à fleurs (II)*. 26,9 x 21,2 cm. Private collection.

OPP.63:616; B.I:1363





Petite tête de femme couronnée. Mougins. 6-December/1963. Frottage on linoleum for *Petite tête de femme couronnée de fleurs (III)*. 26,9 x 21,2 cm. Private collection.

OPP.63:617; B.I:1364



Petit buste de femme. Mougins. 6-December/1963. Frottage on linoleum for *Petit buste de femme (Jacqueline)*. 26,9 x 21,2 cm. Private collection.

OPP.63:618; B.I:1365



Le peintre et son modèle. Mougins. 7-December/1963. Ink on cardboard. 38,7 x 30 cm. G. L. L. Collection.

OPP.63:088; TO.14*:148

Le peintre et son modèle. Mougins. 7-December/1963. Etching & aquatint. 34,5 x 42,2 cm. Christie's. #0393, 1897, 10/30/07.

OPP.63:159; B.I:1144; Ba:1142.Bb2; GE.66*:3; HD.04:59p; WW.91:589p





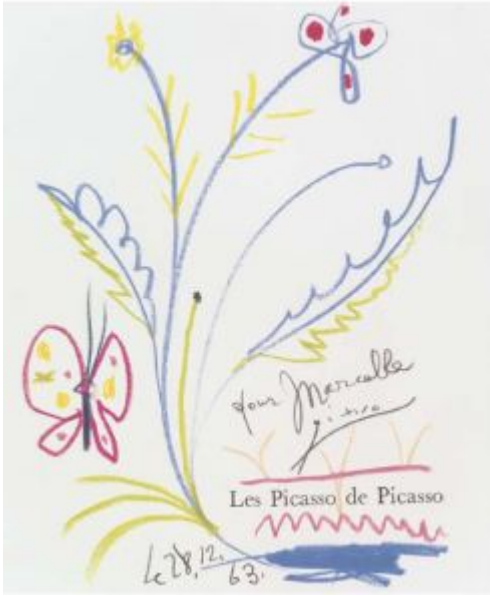
Peintre et modèle au fauteuil (Para Lucia). Mougins. 21-December/1963 [13-February/1964]. Linoleum cut printed in chocolate brown, with red & black inks. 62 x 75 cm. Christie's. #100, 7747, 09/1709. Formerly Christie's. #364, 7612, 10/01/08. Formerly Christie's. #257, 7601, 06/25/08; Sotheby's. #238, N08193, 04/28/06; Lucia Bosé Collection.

OPP.63:112; Ba:1347.I; TE.01*:27p

Le peintre et son modèle. Mougins. 21, 28-December/1963. Encaustic on plywood. 51 x 66 cm. Musée National d'Art Moderne, Centre Georges Pompidou, Paris. (Inv AM.1984.656). Donation Louise et Michel Leiris, 1984.

OPP.63:138; PP.63:274; Z.XXIII:382; BA.22:59p; MF.01*:49; TO.14*:114; WR.80*:447p





Fleurs et papillons (Pour Marcelle). Mougins. 28-December/1963. Wax crayon & pencil on the title page of Les Picasso de Picasso. 30 x 25 cm. Christie's. #423, 6737, 06/26/03.

OPP.63:069

Le fou (L'idiot) (Pour Bella). Mougins. 28-December/1963. Color collotype [After *Le fou (L'idiot) (A mi buen amigo Sebastià Junyent)*]. 79,4 x 31,4 cm. Private collection. Formerly Masterworks Fine Art Gallery. 2008.

OPP.63:230; CC:196





Faune et chèvre. Mougins. 29-December/1963. Gouache & color crayon on paper. 61,5 x 76 cm. Private collection, Switzerland.

OPP.63:308; PP.63:281; Z.XXIII:398; KB.01*:170

Paysage avec faune et chèvre. Mougins. 30-December/1963. Brush & India ink on linoleum cut. 75 x 62 cm. Private collection.

OPP.63:391; PP.63:283; Z.XXIII:390; LC.66*:17





Paysage avec faune et chèvre. Mougins. 30-December/1963. India ink on linogravure. 75 x 62 cm. Private collection.

OPP.63:447; PP.63:282; Z.XXIII:389

Paysage avec faune et chèvre. Mougins. 31-December/1963. Gouache, watercolor, brush, ink & wash over a linoleum cut on paper. 75,1 X 62,1 cm. Omer Tiroche Collection. Formerly Christie's. #132, 5467, 06/21/12; Christie's. #268, 8050, 02/08/12.

OPP.63:243; Ba:1350.II; PP.63:284; Z.XXIII:391; CO.72b*:29; WI.71*:48



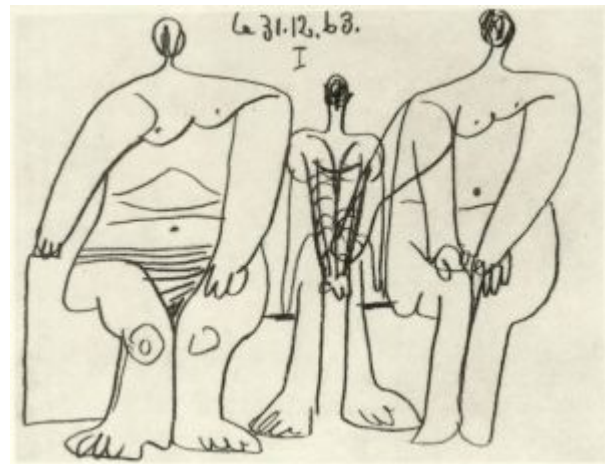


Musicien et animaux. Mougins. 31-December/1963. Ink on linoleum cut [OIC]. 31 x 50,5 cm. Private collection.

OPP.63:451; PP.63:285; Z.XXIII:399

Trois personnages assis I. Mougins. 31-December/1963. Graphite on paper. 21 x 27 cm. Private collection.

OPP.63:524; PP.63:286; Z.XXIII:360





Homme nue assis II. Mougins. 31-December/1963. Graphite on paper. 27 x 21 cm. Private collection.

OPP.63:525; PP.63:287; Z.XXIII:361



Homme nu assis III. Mougins. 31-December/1963. Graphite on paper. 27 x 21 cm. Private collection.

OPP.63:526; PP.63:288; Z.XXIII:362



Homme nu assis IV. Mougins. 31-December/1963. Graphite on paper. 27 x 21 cm. Private collection.

OPP.63:527; PP.63:289; Z.XXIII:363



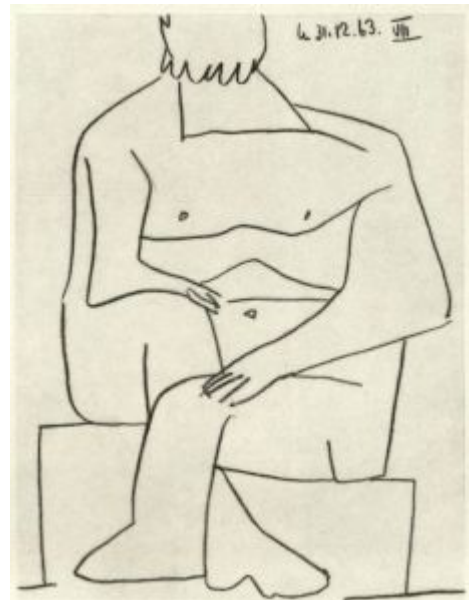
Homme nu assis V. Mougins. 31-December/1963. Graphite on paper. 27 x 21 cm. Private collection.

OPP.63:528; PP.63:290; Z.XXIII:364



Homme nu assis VI. Mougins. 31-December/1963. Graphite on paper. 21 x 27 cm. Private collection.

OPP.63:529; PP.63:291; Z.XXIII:365



Homme nu assis VII. Mougins. 31-December/1963. Graphite on paper. 27 x 21 cm. Private collection.

OPP.63:530; PP.63:292; Z.XXIII:366



Homme nu assis VIII. Mougins. 31-December/1963.
Graphite on paper. 27 x 21 cm. Private collection.

OPP.63:531; PP.63:293; Z.XXIII:367



Homme nu assis IX. Mougins. 31-December/1963.
Graphite on paper. 27 x 21 cm. Private collection.

OPP.63:532; PP.63:294; Z.XXIII:368



Homme nu assis X. Mougins. 31-December/1963. Graphite on paper. 27 x 21 cm. Private collection.

OPP.63:533; PP.63:295; Z.XXIII:369



Homme nu assis XI. Mougins. 31-December/1963. Graphite on paper. 27 x 21 cm. Private collection.

OPP.63:534; PP.63:296; Z.XXIII:370



Le musicien. Mougins. 31-December/1963. Gouache & India ink on linoleum cut [OIC]. 50,2 x 35 cm. Private collection.

OPP.63:545; PP.63:297; Z.XXIII:383

Petit visage no 13. Vallauris. 1963. Glazed ceramic, edition 150. 25 cm. Sotheby's. #122, MI0219, 11/25/03.

OPP.63:076; AR:490





Deux oiseaux no 95. Vallauris. 1963. Partially glazed ceramic plate, edition 150. 25,4 cm. Christie's. #152, 9759, 12/11/03.

OPP.63:079; AR:487; LR.07*:81

Visage no 101. Vallauris. 1963. Painted & glazed white earthenware plate, edition 150. 25 cm. Christie's. #467, 9940, 10/21/04.

OPP.63:087; AR:475





Portrait de Jacqueline de profil. Mougins. 1963.
Linoleum cut printed in white, with red & black inks. [75 x
62] 63,7 x 53 cm. Sotheby's. #254, N08087, 04/29/05.

OPP.63:106; Ba:1351; PP.63:299; Z.XXIII:395;
LC.66*:16

Maternité (Pour Union des Femmes Françaises).
Mougins. 1963. Lithograph, edition 200 [After *Maternité*]. 87
x 60,6 cm. Masterworks Fine Art Gallery. 2006.

OPP.63:113; GU.00:105; PF.10:69





Achilles III (Avec Carl Nesjar). Uzès. 1963.
Engraved concrete [After *Achilles III (Pour mon ami Douglas Cooper)*]. S/U. Château de Castille,
Uzès, Languedoc-Rousillon.

OPP.63:129

Oiseau no. 83. Vallauris. 1963. Painted &
partially glazed white earthenware plate,
edition 200. 25 cm. Sotheby's. #335,
W06712, 10/19/06.

OPP.63:174; AR:483; GR.72:754





Déjeuner sur l'herbe. Mougins. 1963. Hand-woven Aubusson wool tapestry [After *Le déjeuner sur l'herbe (d'après Manet)*]. 320 x 452,1 cm. Christie's. #0369, 1832, 05/10/07.

OPP.63:212

Visage. Vallauris. 1963. Painted & glazed white earthenware plate. 25 cm. Marina Picasso Collection. (Inv 58990). Courtesy Galerie Jan Krugier, Geneva.

OPP.63:218; BA.03a*:288





Visage. Vallauris. 1963. Painted & glazed white earthenware plate. 25,5 cm. Marina Picasso Collection. (Inv 59028). Courtesy Galerie Jan Krugier, Geneva.

OPP.63:219; BA.03a*:291; MF.10*:92p;
WS.07:236p

Tête chrome face. Vallauris. 1963. Porcelain. 29,9 x 27,9 cm. Atelier Carmel. 2005.

OPP.63:221





Buste de femme nue. Mougins. 1963. Wool tapestry [After *Buste de femme nue*]. 178 x 122 cm. Christie's. #0044, 5300, 10/25/07.

OPP.63:225

Tête de femme. Vallauris. [1963]. Jug with painted decoration, Edition 100. 23,5 x 18 cm. DeLind Fine Art Gallery. 2007.

OPP.63:227; GR.74:750





Visage no 192. Vallauris. 1963. Glazed ceramic plate, edition 150. 25,3 cm. Christie's. #26, 5981, 10/29/09.

OPP.63:252; AR:492

Visage no 193. Vallauris. 1963. White earthenware plate, edition 150. 25,5 cm. Sotheby's. #180, N08674, 10/29/10.

OPP.63:267; AR:493





Tête. Vallauris. [1963]. Painted & glazed ceramic plate. 31 cm. Sotheby's. #155, L11005, 02/09/11.

OPP.63:268

Femme assise. Mougins. 1963. Blown glass. 43,8 cm. Sotheby's. #522A, NY7649, 05/09/01.

OPP.63:277





Profil de femme au ruban. Mougins. 1963. Wash on paper.
[74 x 60] 74 x 64 cm. Museu Picasso, Barcelona.

OPP.63:284; MPB:113.028; PP.63:178; Z.XXIII:290;
BA.90a*:70; GL.89*:25; MA.91a*:82; PD.06*:n/a

Carnaval. Mougins. 1963. Photolithograph [After
Carnaval]. 78 x 56 cm. Bonhams. #49, 19088,
09/27/11.

OPP.63:305





Profil, toréador, faune, centaure et baigneuse. Mougins. Late/1963. Engraving on flong of the advertisements page of Le Patriote, 12/63. 60,8 x 43,6 cm. Private collection.

OPP.63:315; Ba:1367; AB.00*:180

Tête de femme. Mougins. 1963. Bronze plate. 63 x 52,3 x 4 cm. Marina Picasso Collection. (Inv 56444). Courtesy Galerie Jan Krugier, Geneva.

OPP.63:322; LM.06*:20





Visage. Vallauris. 1963. Terracotta, modeled, painted & varnished. 26,5 cm. Marina Picasso Collection. (Inv 58849). Courtesy Galerie Jan Krugier, Geneva.

OPP.63:323; LM.06*:21

Signature. Mougins. 1963. Red crayon underlined in blue with blue, yellow & red radiant lines. 38 x 28,3 cm. Sotheby's. #80, L13406, 11/27/13.

OPP.63:325





Le peintre. Mougins. 1964. Original serigraph with hand applied pochoir coloring, edition 350 [After *Le peintre II*]. 58,4 x 74,3 cm. Masterworks Fine Art Gallery. 2006.

OPP.63:355

Peintre et modèle au fauteuil. Mougins. 1963. Linoleum cut rincé in colors on Arches paper. 53 x 63,8 cm. Phillips. #5, UK030115, 01/22/15.

OPP.63:371; Ba:1347; BB.83*:180





Femme assise. Mougins. 1963. Blown glass. 47 cm. Sotheby's. #126, N09416, 11/06/15.

OPP.63:373

Personnage. Vallauris. 1963. Painted, incised & partially glazed ceramic bowl. 14,1 cm. Sotheby's. #623, L16005, 02/05/16.

OPP.63:385





Visage. Vallauris. 1963. Painted & glazed ceramic cup with handle. 14 cm. Sotheby's. #629, L16005, 02/05/16. Formerly Marina Picasso Collection.

OPP.63:386

Mur de l'ancienne orangerie du Château de Castille (Avec Carl Nesjar). Uzès. 1963. Engraved concrete [After *Le déjeuner XVI (d'après Manet)*]. 4025 x 250 cm. Château de Castille, Uzès, Languedoc-Rousillon.

OPP.63:393; PP.63:302a; CE.04:59





Mur de l'ancienne orangerie du Château de Castille: Femme nue allongée I (Avec Carl Nesjar). Uzès. 1963. Engraved concrete [After *Femme nue allongée I (Pour Douglas Cooper)*]. 4025 x 250 cm. Château de Castille, Uzès, Languedoc-Rousillon.

OPP.63:394; PP.63:302b; CE.04:59

Mur de l'ancienne orangerie du Château de Castille: Cavalier VI (Poussin) (Étude) (Avec Carl Nesjar). Uzès. 1963. Engraved concrete [After *Cavalier VI (Poussin) (Étude)*]. 4025 x 250 cm. Château de Castille, Uzès, Languedoc-Rousillon.

OPP.63:395; PP.63:302c; CE.04:59



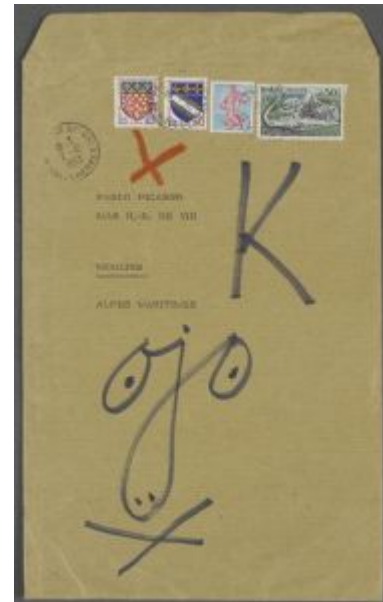


Mur de l'ancienne orangerie du Château de Castille: Le déjeuner II (d'après Manet) (Avec Carl Nesjar). Uzès. 1963. Engraved concrete [After *Le déjeuner II (d'après Manet)*]. 4025 x 250 cm. Château de Castille, Uzès, Languedoc-Rousillon.

OPP.63:396; PP.63:302d; CE.04:59

Ojo sur une enveloppe adressée à l'artiste à Mougins en 1963 annotée 'ojo' et 'K'. Mougins. 1963. Color pencil on envelope [Obverse of *Ojo sur une enveloppe adressée à l'artiste à Mougins en 1963 annotée 'ojo' et 'K'*]. S/U. Musée Picasso, Paris.

OPP.63:424





Ojo sur une enveloppe adressée à l'artiste à Mougins en 1963 annotée 'ojo' et 'K'. Mougins. 1963. Color pencil on envelope [Reverse of *Ojo sur une enveloppe adressée à l'artiste à Mougins en 1963 annotée 'ojo' et 'K'*]. S/U. Musée Picasso, Paris.

OPP.63:425

Pigeon (André Verdet, Pour un nouveau Printemps de Pablo Picasso). Mougins. 1963. Color lithograph. 37,7 x 28,2 cm. Kunsthaus Lempertz, Köln. #1258R, 867, 04/12/04.

OPP.63:432





La colombe de la paix (Pour Madame Frédérique).
Mougins. 1963. Brown & red wax crayon. 55 x 187 cm.
Sotheby's. #129, PF1803, 05/24/18.

OPP.63:437

Lettre autographe signée à Inès Sassier. Mougins. [1963]. Blue ballpoint pen on paper. S/U. Private collection.

OPP.63:438





Tête de femme: profil. Mougins. 1963. Linoleum cut with India ink [OïC]. 75 x 62 cm. Private collection. Formerly Christie's. #180, 11/13/85.

OPP.63:469; PP.63:298; Z.XXIII:394



Tête de femme. Mougins. 1963. Linoleum cut with India ink [OïC]. 75 x 62 cm. Private collection.

OPP.63:470; PP.63:300; Z.XXIII:396



Tête de femme. Mougins. 1963. Linoleum cut with India ink [OIC]. 75 x 62 cm. Private collection.

OPP.63:471; PP.63:301; Z.XXIII:397



Faune et chèvre. Mougins. 1963. Ink on reused linoleum cut. 75 x 62 cm. Private collection.

OPP.63:479; PP.63:279; Z.XXIII:392



Flamengo. Mougins. 1963. Blown Murano glass, with iridescent surface. 49,2 cm. Bonhams. #67AR, 25438, 06/13/19.

OPP.63:552

Ébauche de visage. Vallauris. [1963]. Painted & partially glazed ceramic; oval plate. 22,6 cm. Sotheby's. #124, L20005, 02/19/20. Formerly Marina Picasso Collection.

OPP.63:565; HB.85*:n/a





La marchande de poissons. Mougins. [1963]. Paper cut-out. 26,5 x 20 cm. Espace Tajan. #25, 2121, 03/17/21.

OPP.63:575

Motifs de decoration. Vallauris. [1963]. Painted & glazed ceramic; round bowl. 16,3 cm. Sotheby's. #9, L21005, 04/14/21. Formerly Marina Picasso Collection.

OPP.63:581



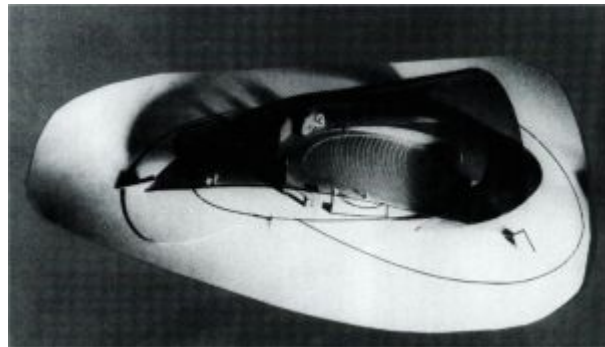


Homme avec son cheval et femme à la fenêtre. Mougins. 1963. Linocut rincé printed in white with India ink, on Arches wove paper. 27 x 21,1 cm. Bonhams. #44, 27761, 05/18/22.

OPP.63:594; Ba:1352.2

Le déjeuner sur l'herbe. Mougins. 1963. Cutout figures. S/U. Private collection.

OPP.63:601; PP.63:303; WS:642.a





Le peintre et son modèle. Mougins. 1963. Ink on linocut with brown background. 62 x 75 cm. Private collection.

OPP.63:602; PP.63:272; Z.XXIII:381

Visage no 54. Vallauris. 1963. Ceramic plate painted & partially glazed, edition 150. 25 x 25 cm. Christie's. #163, 2382, 11/28/00.

OPP.63:011; AR:467





Visage no 59. Vallauris. 1963. Ceramic plate painted & partially glazed, edition 150. 25 x 25 cm. Sotheby's. #306, W06712, 10/19/06.

OPP.63:012; AR:469

Visage no 127. Vallauris. 1963. Painted & glazed ceramic plate, edition 150. 25 x 25 cm. Sotheby's. #184, W05710, 03/23/05.

OPP.63:013; AR:478





Visage no 65. Vallauris. 1963. Ceramic plate painted & partially glazed, edition 150. 25 x 25 cm. Sotheby's. #465, N07717, 11/02/01.

OPP.63:014; AR:471

Motif spirale no 7. Vallauris. 1963. Partially glazed ceramic plaque, edition 150. 25,5 cm. Christie's. #434, 9065, 04/06/01.

OPP.63:018; AR:459





Motif spiralé no 66. Vallauris. 1963. Partially glazed ceramic plate, edition 150. 25,5 cm. Christie's. #430, 9065, 04/06/01.

OPP.63:019; AR:472

Visage no 189. Vallauris. 1963. Glazed white ceramic plate, painted in colors. 25,4 cm. Christie's. #186, 9632, 04/25/01.

OPP.63:022; AR:491





Oiseau no 93. Vallauris. 1963. Partially glazed white ceramic plates, painted in black and colors, edition 200. 25,4 cm. Christie's. #185, 9632, 04/25/01.

OPP.63:024; AR:486

Visage no 13. Vallauris. 1963. White earthenware plate, glazed, edition 150. 25 cm. Sotheby's. #251, N08436, 05/01/08.

OPP.63:026; AR:461





Motif no 17. Vallauris. 1963. White earthenware plate, with glazes, edition 150. 25,2 cm. Sotheby's. #117, W04704, 03/24/04.

OPP.63:027; AR:462

Visage no 202. Vallauris. 1963. Painted & glazed white earthenware plate, edition 500. 25 cm. Museo Picasso, Colección Eugenio Arias, Buitrago del Lozoya. (Inv 55). Also Sotheby's. #118, W03703, 03/20/03.

OPP.63:029; AR:495; JR.90:55





Oiseau no 76. Vallauris. 1963. Ceramic Plate. 25 cm. Christie's. #170, 9712, 06/13/01.

OPP.63:030; AR:481

Pigeon et visage. Vallauris. 1963. Ceramic. 24,2 cm. Sotheby's. #6VV8.

OPP.63:031





Profil de femme no 67. Vallauris. 1963. Earthenware plate, partially glazed, painted in black, white & blue, edition 100. [25,4] 25,5 cm. Sotheby's. #427, N07717, 11/02/01.

OPP.63:037; AR:473

Visage no 0. Vallauris. 1963. White earthenware plate, decoration in engobes and enamel under glaze, edition 500. 25,5 cm.. Sotheby's. #488, N07717, 11/02/01.

OPP.63:039; AR:458





Oiseau no 91. Vallauris. 1963. Earthenware plate, partially glazed, painted in black, white & blue, edition 150. 25,5 cm. Sotheby's. #493, N07717, 11/02/01.

OPP.63:041; AR:485

Petit visage no 12. Vallauris. 1963. Earthenware plate, partially glazed, painted in white, black, yellow & blue, edition 150. 25 x 22 cm. Sotheby's. #490, N07717, 11/02/01.

OPP.63:044; AR:460





Homme avec son cheval et femme à la fenêtre.
Mougins. 1963. Linoleum cut printed in white, with additions in India ink on Arches wove. 31,5 x 27 cm. Sotheby's. #213, N07787, 05/03/02.

OPP.63:045; Ba:1352.1

Visage no 144. Vallauris. 1963. Earthenware plate, glazed, painted in shades of blue & green, edition 150. 26 cm. Sotheby's. #337, N07888, 05/02/03.

OPP.63:057; AR:480





Oiseau no 82. Vallauris. 1963. Partially glazed ceramic plate, edition 150. 25,4 cm. Christie's. #149, 9759, 12/11/03.

OPP.63:078; AR:482

Visage no 130. Vallauris. 1963. Painted & partially glazed white earthenware plate, edition 500. 25 cm. Sotheby's. #98, W04704, 03/24/04.

OPP.63:082; AR:479





Oiseau no 86. Vallauris. 1963. Partially glazed white ceramic plate painted in colors, edition 150. 25,4 x 26,6 cm. Christie's. #222, 1368, 04/28/04.

OPP.63:084; AR:484

Visage no 197. Vallauris. 1963. Earthenware plate glazed & painted black, green & blue, edition 500. 25,4 cm. Sotheby's. #211, N07988, 04/20/04.

OPP.63:085; AR:494





Visage no 203. Vallauris. 1963. Glazed earthenware plate, edition 150. 25,4 cm. Christie's. #452, 9940, 10/21/04.

OPP.63:086; AR:496

Petit cheval. Vallauris. 1963. Painted & partially glazed white earthenware plate, edition 150. 25 cm. Sotheby's. #167, W04714, 10/20/04.

OPP.63:089; AR:470





Petits visages no 57. Vallauris. 1963. Painted & partially glazed white earthenware pitcher, edition 150. 25 cm. Sotheby's. #165, W04714, 10/20/04.

OPP.63:090; AR:468

Visage. Vallauris. 1963. Partially glazed ceramic plate, edition 150. 25,4 cm. Christie's. #461, 5814, 04/07/05.

OPP.63:103; AR:489





Personnages no 28. Vallauris. 1963. Earthenware plate painted in black, yellow, blue, green & red, edition 150. 25,4 cm. Sotheby's. #277, N08087, 04/29/05.

OPP.63:105; AR:463

Tête no 72. Vallauris. 1963. Earthenware plate glazed in light blue and beige, edition 150. 25,5 cm. Christie's. #130, 5402, 05/24/05.

OPP.63:111; AR:474; GR.79:751





Drapeau de la Catalogne (Jaume Sabartés, Les Bleus de Barcelone). Mougins. 1963. Print on cloth. 54,2 x 41,9 cm. Christie's. #370, 5624, 11/30/05.

OPP.63:167

Oiseau no 96. Vallauris. 1963. Partially glazed white ceramic plate painted in colors, edition 150. 25,7 cm. Christie's. #473, 1624, 02/09/06.

OPP.63:168; AR:488





Visage no 111. Vallauris. 1963. Painted & glazed white earthenware plate, edition 500. 25 cm. Sotheby's. #147, W06710, 03/23/06.

OPP.63:169; AR:476

Motifs no 45. Vallauris. 1963. Partially glazed ceramic plate, edition 150. 25,4 cm. Christie's. #118, 5008, 04/05/06.

OPP.63:170; AR:465





Picador et taureau. Mougins. 1963~1964.
Linoleum cut. 62 x 75 cm. Sotheby's. #81,
N09138, 05/01-02/14.

OPP.63:352